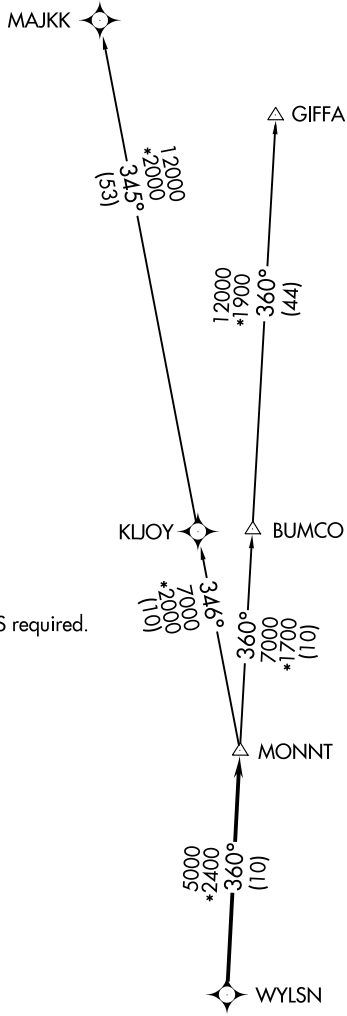


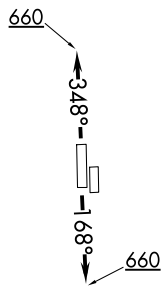
# WYLSN FIVE DEPARTURE (RNAV)

ATIS  
 128.375  
 CLNC DEL  
 119.45  
 GND CON  
 121.8 239.0  
 HOOKS TOWER\*  
 127.4 354.1 (EAST)  
 118.4 (CTAF) 354.1 (WEST)  
 HOUSTON DEP CON  
 119.7 281.4

**TOP ALTITUDE:  
ASSIGNED BY ATC**



NOTE: RADAR required.  
 NOTE: DME/DME/IRU or GPS required.  
 NOTE: RNAV 1.



### TAKEOFF MINIMUMS

Rwy 17L, 35R: NA - Environmental.  
 Waterway 17, 35: NA - Air Traffic.  
 Rwy 17R, 35L: Standard with minimum climb of 500' per NM to 660.

(NARRATIVE ON FOLLOWING PAGE)  
 (NOTES CONTINUED ON FOLLOWING PAGE)

NOTE: Chart not to scale.

SC-5, 22 JUN 2017 to 20 JUL 2017

SC-5, 22 JUN 2017 to 20 JUL 2017