

# WHAEL THREE ARRIVAL

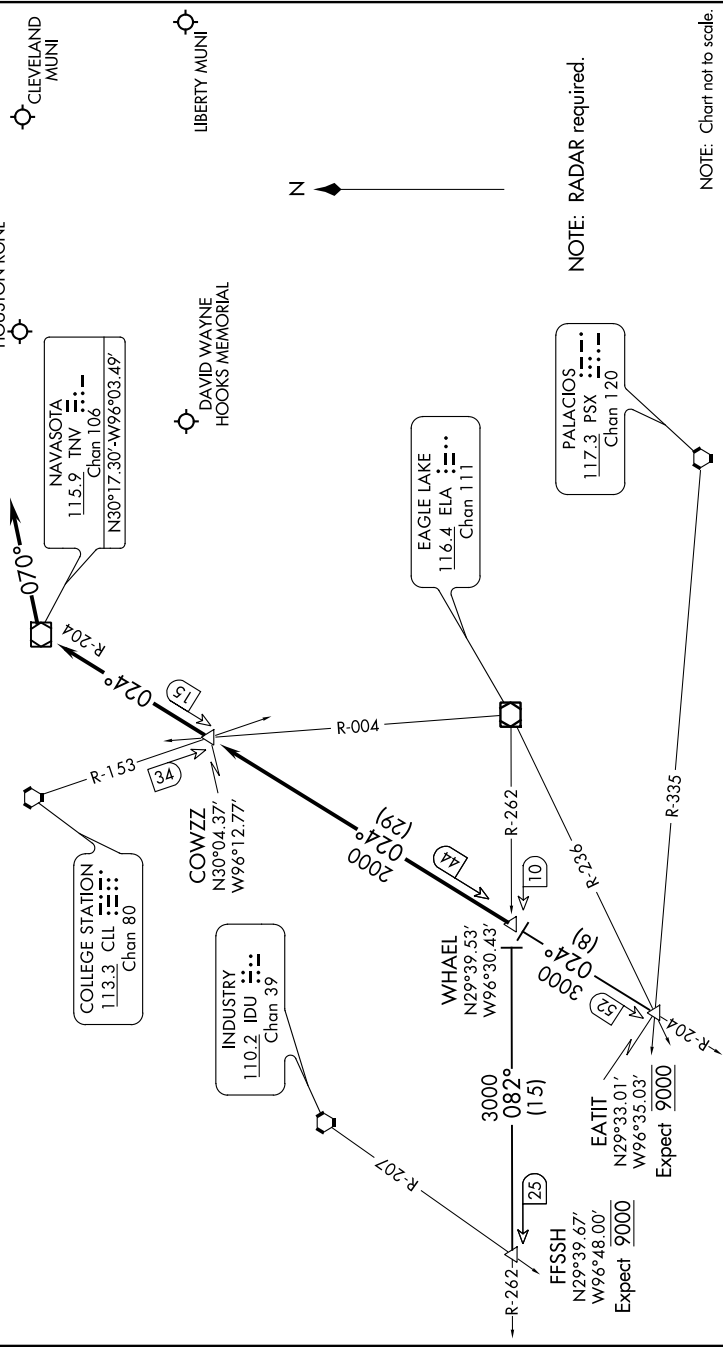
SC-5, 22 JUN 2017 to 20 JUL 2017

## ARRIVAL DESCRIPTION

**FFSSH TRANSITION (FFSSH.WHAEL3):** From over FFSSH INT on ELA R-262 to WHAEL INT. Thence, . . . . .

**EATIT TRANSITION (EATIT.WHAEL3):** From over EATIT INT on TNV R-204 to WHAEL INT. Thence, . . . . .

**WHAEL INT.** Thence, . . . . . from over WHAEL INT on TNV R-204 to COWZZ INT, then on TNV R-204 to TNV VOR/DME. Depart TNV VOR/DME heading 070° for vectors to final approach course.



NOTE: Chart not to scale.

# WHAEL THREE ARRIVAL

SC-5, 22 JUN 2017 to 20 JUL 2017