

WAAS CH <b>72715</b> <b>W33A</b>	APP CRS <b>327°</b>	Rwy Idg TDZE Apt Elev	<b>4201</b> <b>322</b> <b>322</b>
--	------------------------	-----------------------------	---

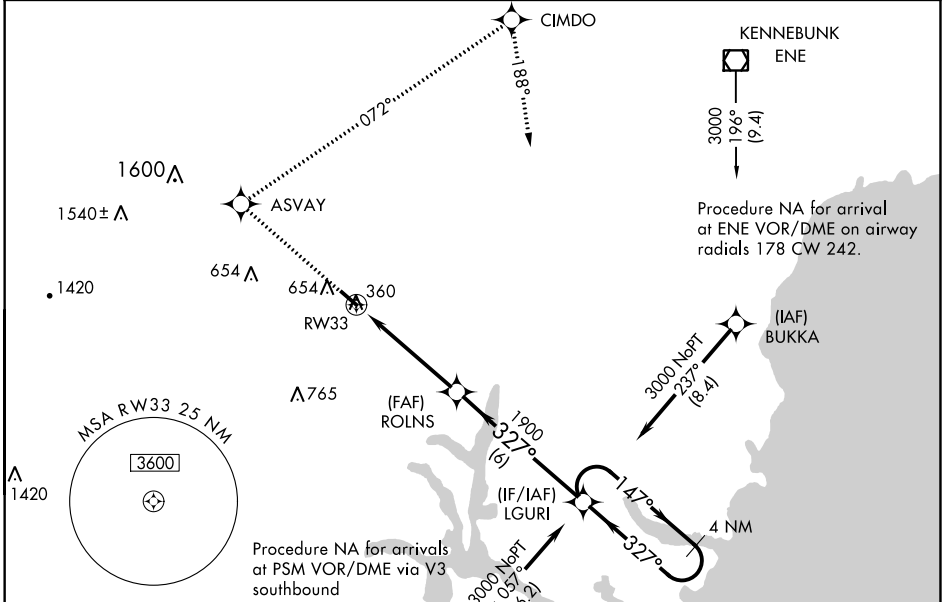
# RNAV (GPS) RWY 33

SKYHAVEN (DAW)

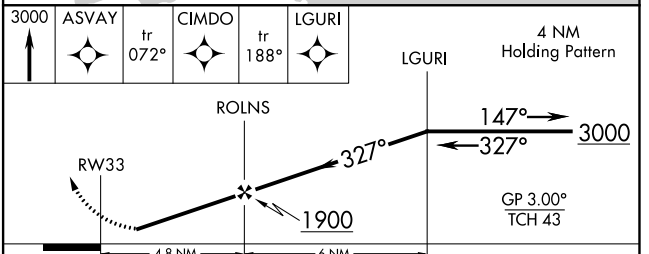
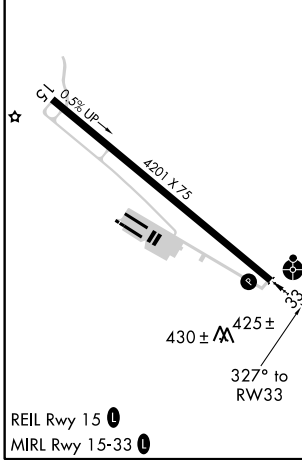
**⚠** Baro-VNAV NA when using Portsmouth altimeter setting. For uncompensated Baro-VNAV systems, LNAV/VNAV NA below -15°C (5°F) or above 54°C (130°F). DME/DME RNP-0.3NA. Visibility reduction by helicopters NA. When local altimeter setting not received, use Portsmouth altimeter setting and increase all D 62 feet and all MDA 80 feet, and LPV all Cats, LNAV/VNAV all Cats, LNAV Cat C, and Circling Cat B-C ¼ mile.

**ODALS**  
 ...  
**MISSED APPROACH:** Climb to 3000 direct ASVAY and via track 072° to CIMDO and via track 188° to LGURI and hold.

ASOS <b>135.275</b>	BOSTON APP CON <b>125.05 269.4</b>	UNICOM <b>122.7 (CTAF)</b>
------------------------	---------------------------------------	-------------------------------



ELEV 322	TDZE 322
----------	----------



CATEGORY	A	B	C	D
LPV DA	627-1		305 (400-1)	NA
LNAV/VNAV DA	695-1¼		373 (400-1¼)	NA
LNAV MDA	860-1	538 (600-1)	860-1½ 538 (600-1½)	NA
CIRCLING	1020-1		698 (700-1)	1020-2 698 (700-2)

NE-1, 22 JUN 2017 to 20 JUL 2017

NE-1, 22 JUN 2017 to 20 JUL 2017