

APP CRS	Rwy Idg	2600
297°	TDZE	5
	Apt Elev	5

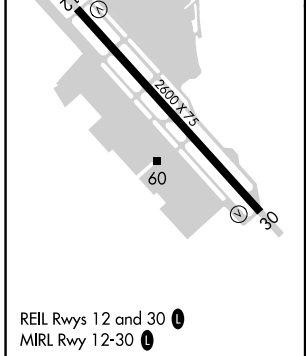
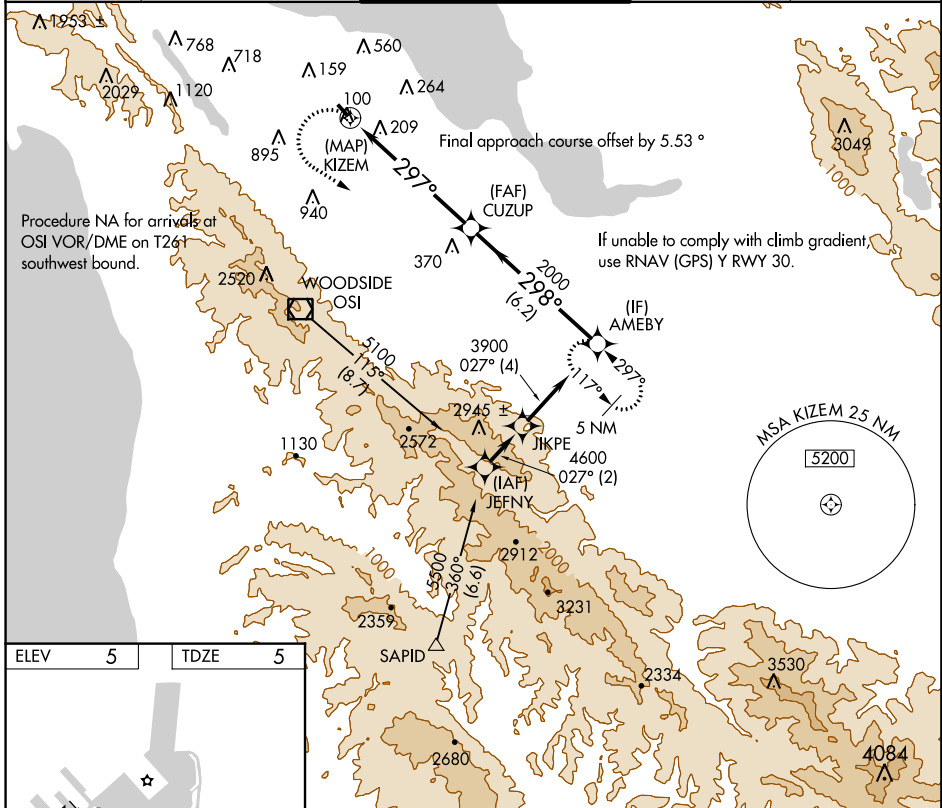
RNAV (GPS) Z RWY 30

SAN CARLOS (SQL)

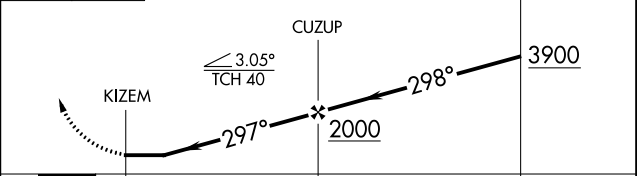
▽ DME/DME RNP-0.3 NA. When local altimeter setting not received, use San Francisco Intl altimeter setting and increase all MDA 40 feet. Rwy 30 visibility reduction by helicopters below 1 SM NA.

▲ MISSED APPROACH: Climbing left turn to 5400 direct AMEBY and hold, continue climb-in-hold to 5400. Missed approach requires minimum climb of 302 feet per NM to 5400.

ATIS 125.9	NORCAL APP CON 133.95 317.6	SAN CARLOS TOWER ★ 119.0 (CTAF) 0 326.2	GND CON 121.6	UNICOM 122.95
----------------------	---------------------------------------	---	-------------------------	-------------------------



5400 AMEBY VGSi and descent angles not coincident (VGSi Angle 3.00/TCH 25).



CATEGORY	A	B	C	D
LNAV MDA	900-1¼ 895 (900-1¼)	900-1½ 895 (900-1½)	NA	

SW-2, 22 JUN 2017 to 20 JUL 2017

SW-2, 22 JUN 2017 to 20 JUL 2017