

# HI-TACAN RWY 13

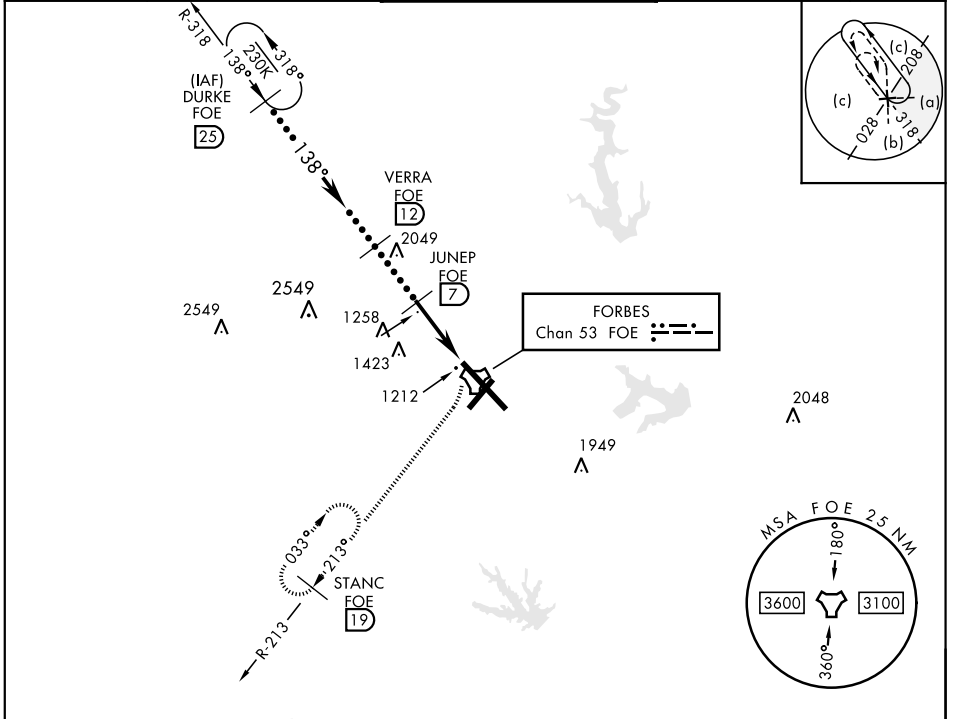
TACAN FOE Chan <b>53</b>	APCH CRS <b>138°</b>	Rwy Idg <b>12,803</b> TDZE <b>1065</b> Arpt Elev <b>1078</b>	JAL-424 [USAF]	TOPEKA RGNL (KFOE)
-----------------------------	-------------------------	--	----------------	--------------------

**▼** \* Inoperative table does not apply.

SALS **(A2)**

MISSED APPROACH: Climbing right turn to 3000 via FOE TACAN R-213 to STANC/19 DME and hold.

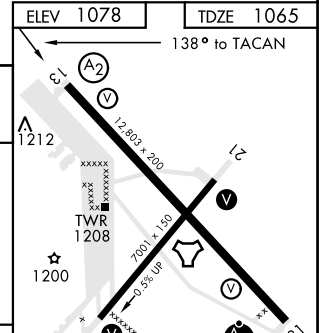
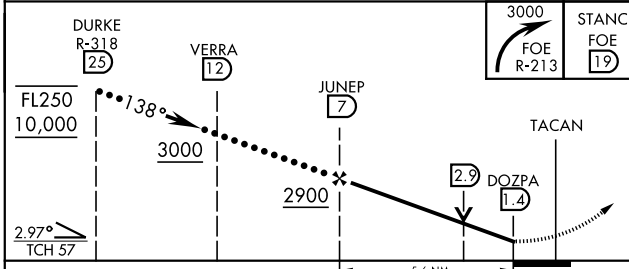
ATIS <b>128.25</b>	KANSAS CITY CENTER <b>123.8 343.7</b>	FORBES TOWER ★ <b>120.8 (CTAF) 340.2</b>	GND CON <b>121.7 275.8</b>	ASOS
-----------------------	--	---	-------------------------------	------



EMERG SAFE ALT 100 NM 3600

ELEV 1078	TDZE 1065
-----------	-----------

138° to TACAN



CATEGORY	C	D	E
S-13 *	1600-1¼ 535 (600-1¼)	1600-1½ 535	(600-1½)
CIRCLING	1600-1½ 522 (600-1½)	1700-2 622 (700-2)	1720-2¼ 642 (700-2¼)

MIRL Rwy 3-21  
REIL Rwy 3, 13, and 21  
HIRL Rwy 13-31

# HI-TACAN RWY 13

NC-2, 20 JUL 2017 to 17 AUG 2017

NC-2, 20 JUL 2017 to 17 AUG 2017