


LOM SH <b>375</b>	APP CRS <b>047°</b>	Rwy Idg 6002	TDZE 1184
		Apt Elev 1201	

AL-5369 (FAA)

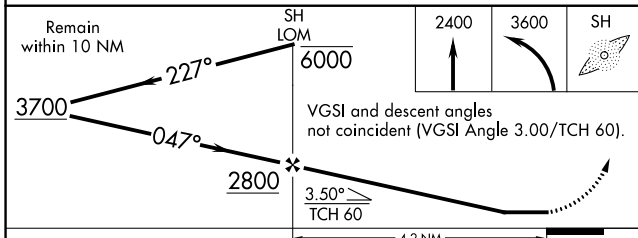
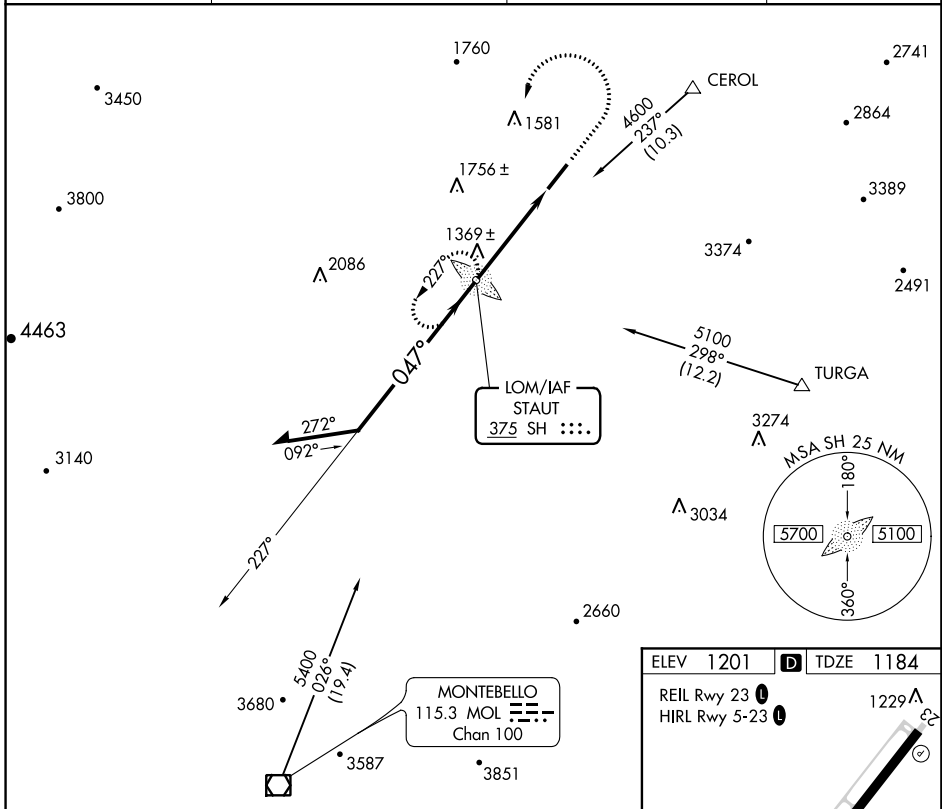
# NDB RWY 5

SHENANDOAH VALLEY RGNL (SHD)

When local altimeter setting not received, use Charlottesville altimeter setting: increase all MDAs 140 feet and visibility S-5 and Circling Cat C/D ½ mile.

MALSR  MISSED APPROACH: Climb to 2400 then climbing left turn to 3600 direct SH LOM and hold.

AWOS-3 <b>124.925</b>	POTOMAC APP CON <b>132.85 323.125</b>	CLNC DEL <b>118.35</b>	UNICOM <b>123.0 (CTAF) 0</b>
--------------------------	--	---------------------------	---------------------------------



ELEV 1201	TDZE 1184
REIL Rwy 23	HIRL Rwy 5-23
1246	1229
1233	
0.4% UP	6002 X 150
047° 4.2 NM from FAF	
FAF to MAP 4.2 NM	
Knots	60 90 120 150 180
Min:Sec	4:12 2:48 2:06 1:41 1:24

CATEGORY	A	B	C	D
S-5	1760-¾ 576 (600-¾)		1760-1 576 (600-1)	1760-1½ 576 (600-1½)
CIRCLING	1760-1 559 (600-1)		1760-1½ 559 (600-1½)	1820-2 619 (700-2)

NE-3, 20 JUL 2017 to 17 AUG 2017

NE-3, 20 JUL 2017 to 17 AUG 2017