

APP CRS 083°	Rwy Idg 4900
	TDZE 634
	Apt Elev 634

RNAV (GPS) RWY 8

GRIFFITH-MERRILLVILLE (Ø5C)

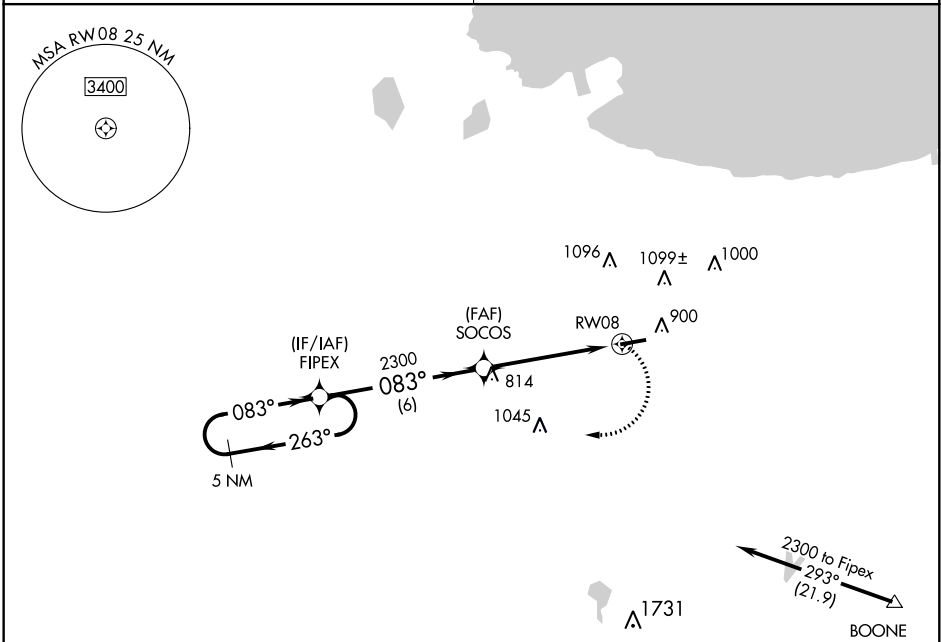
▽ DME/DME RNP -0.3 NA. Obtain local altimeter setting on CTAF; when not received use Chicago Midway Intl altimeter setting and increase all MDAs 60 feet. Visibility reduction by helicopters NA.

▲ NA

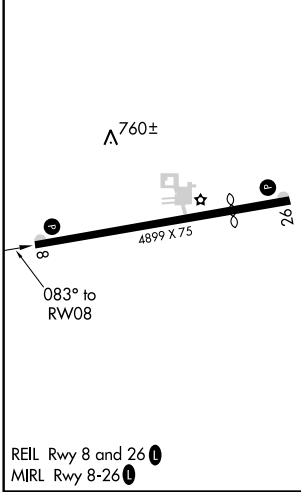
MISSED APPROACH: Climbing right turn to 2300 direct FIPEX and hold.

CHICAGO APP CON
133.1 285.6

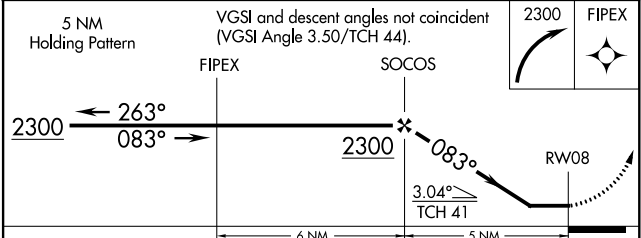
UNICOM
123.0 (CTAF) 0



ELEV 634	TDZE 634
----------	----------



Procedure NA for arrivals at BOONE via V422 southeastbound.



CATEGORY	A	B	C	D
LNNAV MDA	1080-1	446 (500-1)	NA	
CIRCLING	1200-1	566 (600-1)	NA	

EC-2, 20 JUL 2017 to 17 AUG 2017

EC-2, 20 JUL 2017 to 17 AUG 2017