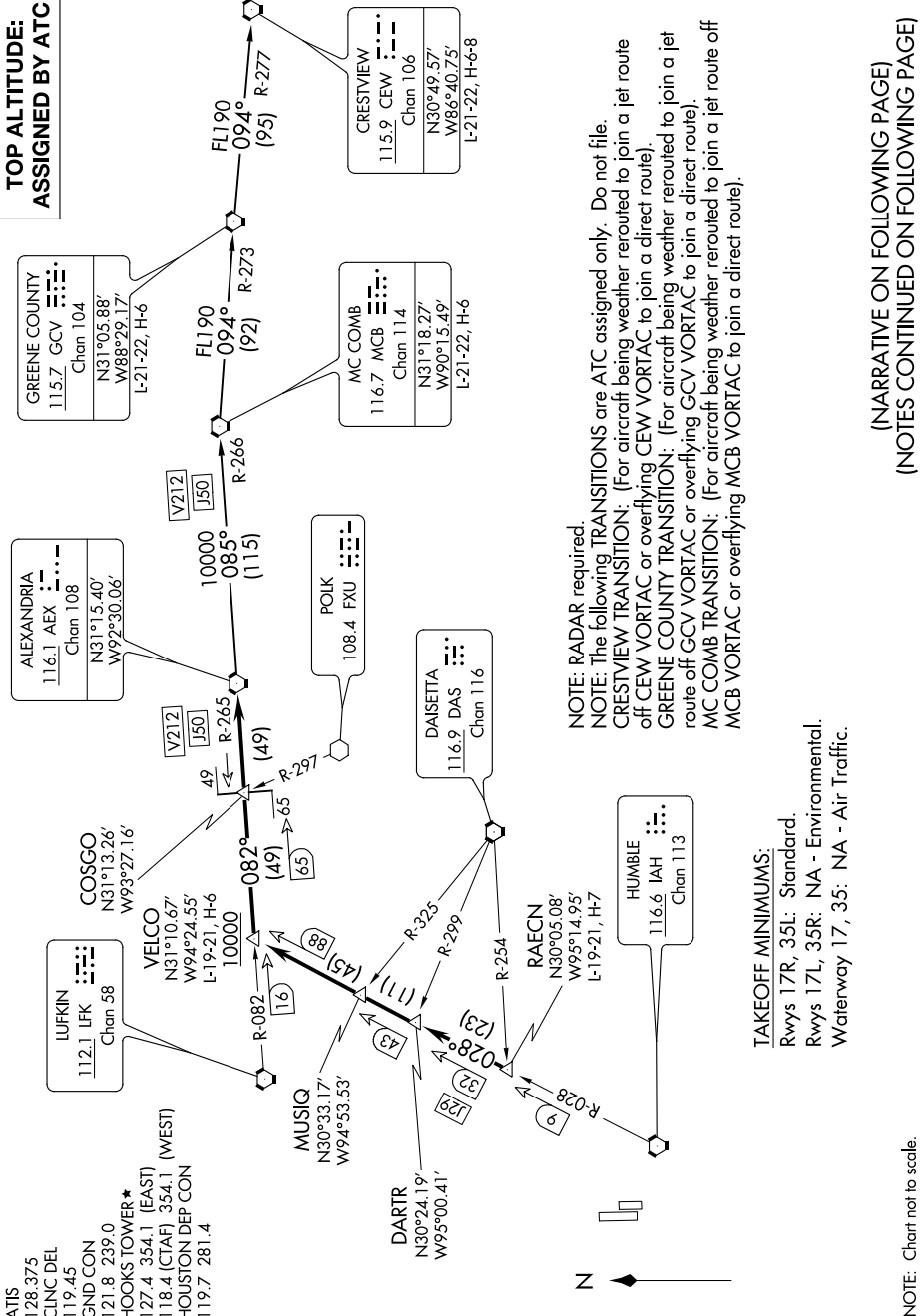


# ALEXANDRIA ONE DEPARTURE

**TOP ALTITUDE:  
ASSIGNED BY ATC**



- ATIS 128.375
- CINC DEL 119.45
- GND CON 121.8
- HOOKS TOWER\* 121.8 239.0
- 127.4 354.1 (EAST)
- 118.4 (CTAF) 354.1 (WEST)
- HOUSTON DEP CON 119.7 281.4

# ALEXANDRIA ONE DEPARTURE

**NOTE: RADAR required.**  
**NOTE: The following TRANSITIONS are ATC assigned only. Do not file.**  
**CRESTVIEW TRANSITION:** (For aircraft being weather routed to join a jet route off CEW VORTAC or overflying CEW VORTAC to join a direct route).  
**GREENE COUNTY TRANSITION:** (For aircraft being weather routed to join a jet route off GCV VORTAC or overflying GCV VORTAC to join a direct route).  
**MC COMB TRANSITION:** (For aircraft being weather routed to join a jet route off MC COMB VORTAC or overflying MC COMB VORTAC to join a direct route).

**TAKEOFF MINIMUMS:**  
 Rwy 17R, 35L: Standard.  
 Rwy 17L, 35R: NA - Environmental.  
 Waterway 17, 35: NA - Air Traffic.

(NARRATIVE ON FOLLOWING PAGE)  
 (NOTES CONTINUED ON FOLLOWING PAGE)

SC-5, 20 JUL 2017 to 17 AUG 2017

SC-5, 20 JUL 2017 to 17 AUG 2017

NOTE: Chart not to scale.