

(CRIED9.CRIED) 17173

CRIED NINE DEPARTURE

DAVID WAYNE HOOKS MEMORIAL (DWH)

AL-5457 (FAA)

HOUSTON, TEXAS

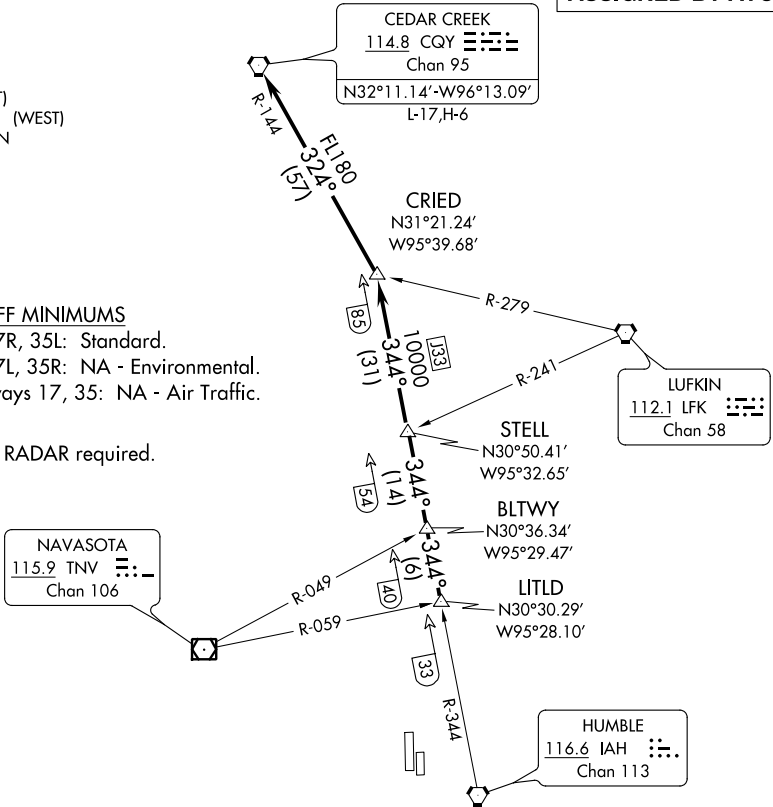
**TOP ALTITUDE:
ASSIGNED BY ATC**

ATIS
 128.375
 CLNC DEL
 119.45
 GND CON
 121.8 239.0
 HOOKS TOWER *
 127.4 354.1 (EAST)
 118.4 (CTAF) 354.1 (WEST)
 HOUSTON DEP CON
 119.7 281.4

TAKEOFF MINIMUMS

Rwy 17R, 35L: Standard.
 Rwy 17L, 35R: NA - Environmental.
 Waterways 17, 35: NA - Air Traffic.

NOTE: RADAR required.



(NOTES CONTINUED ON FOLLOWING PAGE)
 (NARRATIVE ON FOLLOWING PAGE)

NOTE: Chart not to scale.

CRIED NINE DEPARTURE

(CRIED9.CRIED) 22JUN17

HOUSTON, TEXAS

DAVID WAYNE HOOKS MEMORIAL (DWH)

SC-5, 20 JUL 2017 to 17 AUG 2017

SC-5, 20 JUL 2017 to 17 AUG 2017