

LAKE CHARLES FIVE DEPARTURE

ATIS
128.375
CLNC DEL
119.45
GND CON
121.8 239.0
HOOKS TOWER*
127.4 354.1 (EAST)
118.4 (CTAF) 354.1 (WEST)
HOUSTON DEP CON
119.7 281.4

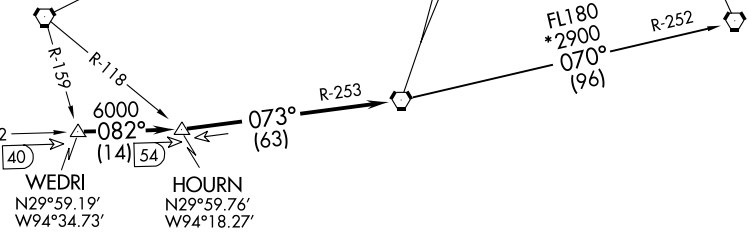
**TOP ALTITUDE:
ASSIGNED BY ATC**

FIGHTING TIGER
116.5 LSU :...
Chan 112
N30°29.11'-W91°17.64'
L-21-22, H-7

LAKE CHARLES
113.4 LCH :...
Chan 81
N30°08.49'-W93°06.33'

DAISETTA
116.9 DAS :...
Chan 116

HUMBLE
116.6 IAH :...
Chan 113



TAKEOFF MINIMUMS
Rwy 17L, 35R NA - Environmental.
Waterway 17, 35 NA - Air Traffic.
Rwy 17R, 35L Standard.

TAKEOFF OBSTACLE NOTES

- Rwy 17R:** Multiple trees beginning 708' from DER, 68' left of centerline, up to 71' AGL/220' MSL.
Multiple hangars beginning 433' from DER, 515' left of centerline, up to 37' AGL/182' MSL.
DME antenna 653' from DER, 256' left of centerline, 13' AGL/162' MSL.
Multiple trees and pole beginning 85' from DER, 294' right of centerline, up to 45' AGL/189' MSL.
- Rwy 35L:** Multiple trees and poles beginning 144' from DER, 32' left of centerline, up to 79' AGL/238' MSL.
Multiple hangars and buildings beginning 85' from DER, 9' left of centerline, up to 53' AGL/202' MSL.
Multiple trees, towers, and poles beginning 100' from DER, 124' right of centerline, up to 93' AGL/247' MSL.
Vehicle and road 315' from DER, on centerline, 15' AGL/166' MSL.
Building 894' from DER, 231' right of centerline, 23' AGL/173' MSL.

NOTE: Chart not to scale.

DEPARTURE ROUTE DESCRIPTION

When entering controlled airspace, climb on assigned heading for RADAR vectors to WEDRI INT. Maintain ATC assigned altitude. Expect filed altitude 10 minutes after departure, thence. . . .

. . . .on IAH R-082 to HOURN INT, then on LCH R-253 to LCH VORTAC.

FIGHTING TIGERS TRANSITION (LCH5.LSU): From over LCH VORTAC on LCH R-070 and LSU R-252 to LSU VORTAC.

SC-5, 20 JUL 2017 to 17 AUG 2017

SC-5, 20 JUL 2017 to 17 AUG 2017