

ATIS

- 128.375
- CINCDEL
- 119.45
- GND/CON
- 121.8, 239.0
- HOOKS TOWER*
- 127.4, 354.1 (EAST)
- 118.4 (CTAF) 354.1 (WEST)
- HOUSTON DEP CON
- 119.7, 281.4



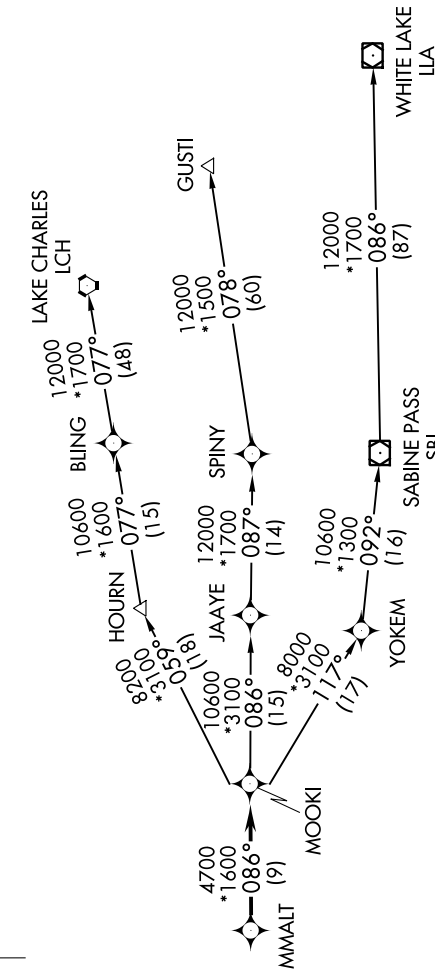
TOP ALTITUDE:
ASSIGNED BY ATC

NOTE: DME/DME/IRU or GPS required.

NOTE: RADAR required.

NOTE: RNAV 1.

NOTE: GUSTI and LCH TRANSITIONS ATC assigned only for aircraft departing AXH, EFD, GLS, HPY, IWS, IBX, LVJ, SGR, TME, T00, T41 and 54T.



TAKEOFF MINIMUMS:

- Rwys 17L, 35R: NA - Environmental.
- Waterway 17, 35: NA - Air Traffic.
- Rwys 17R, 35L: Standard with minimum climb of 500' per NM 660.

(NARRATIVE ON FOLLOWING PAGE)
(NOTES CONTINUED ON FOLLOWING PAGE)

NOTE: Chart not to scale.