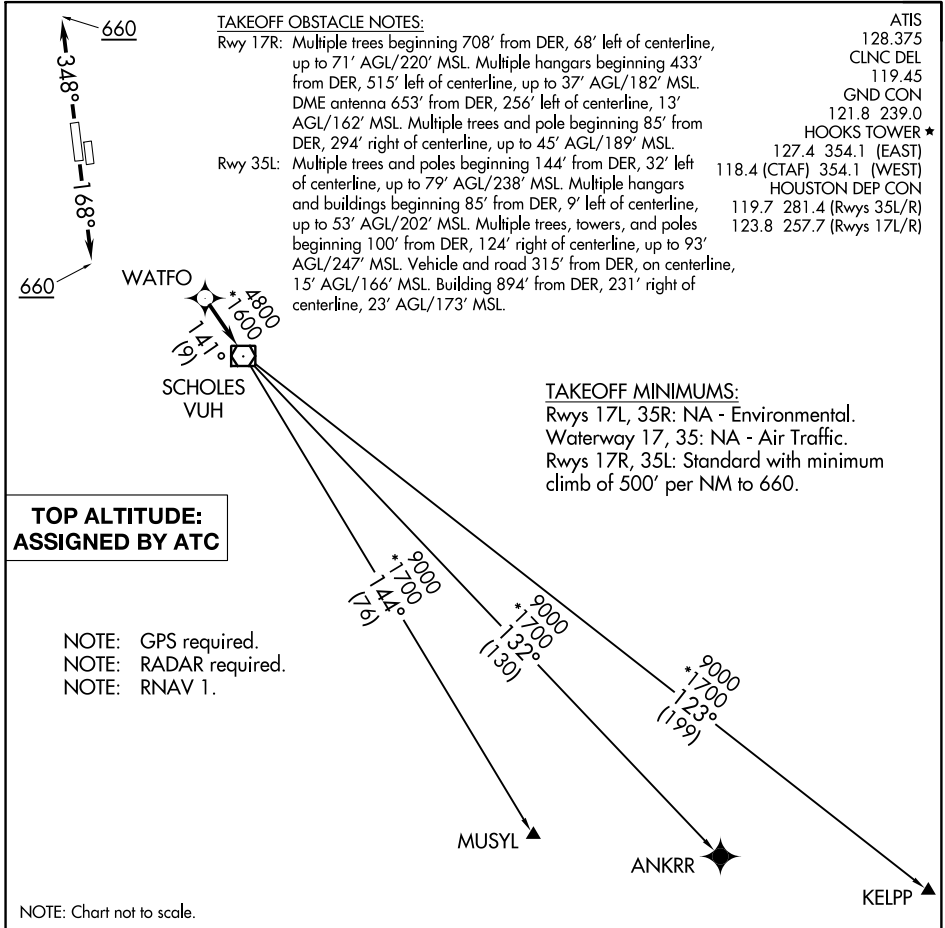


WATFO FOUR DEPARTURE (RNAV)



SC-5, 20 JUL 2017 to 17 AUG 2017

SC-5, 20 JUL 2017 to 17 AUG 2017

DEPARTURE ROUTE DESCRIPTION

TAKEOFF RWY 17R: Climb on heading 168° to 660, expect RADAR vectors to WATFO, thence. . . .

TAKEOFF RWY 35L: Climb on heading 348° to 660, expect RADAR vectors to WATFO, thence. . . .

. . . .on track 141° to VUH VOR/DME, then on (transition). Maintain ATC assigned altitude. Expect filed altitude 10 minutes after departure.

ANKRR TRANSITION (WATFO4.ANKRR)
KELPP TRANSITION (WATFO4.KELPP)
MUSYL TRANSITION (WATFO4.MUSYL)