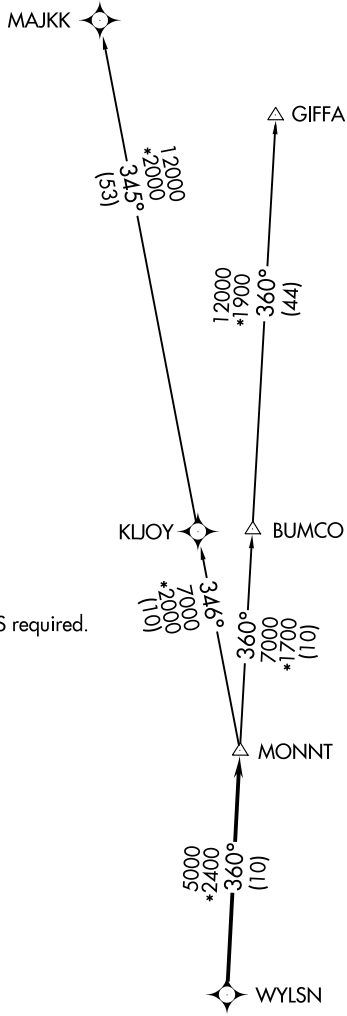


WYLSN FIVE DEPARTURE (RNAV)

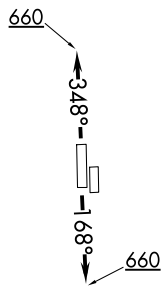
HOUSTON, TEXAS

ATIS
 128.375
 CLNC DEL
 119.45
 GND CON
 121.8 239.0
 HOOKS TOWER*
 127.4 354.1 (EAST)
 118.4 (CTAF) 354.1 (WEST)
 HOUSTON DEP CON
 119.7 281.4

**TOP ALTITUDE:
ASSIGNED BY ATC**



NOTE: RADAR required.
 NOTE: DME/DME/IRU or GPS required.
 NOTE: RNAV 1.



TAKEOFF MINIMUMS

Rwy 17L, 35R: NA - Environmental.
 Waterway 17, 35: NA - Air Traffic.
 Rwy 17R, 35L: Standard with minimum climb of 500' per NM to 660.

(NARRATIVE ON FOLLOWING PAGE)
 (NOTES CONTINUED ON FOLLOWING PAGE)

NOTE: Chart not to scale.

SC-5, 20 JUL 2017 to 17 AUG 2017

SC-5, 20 JUL 2017 to 17 AUG 2017