

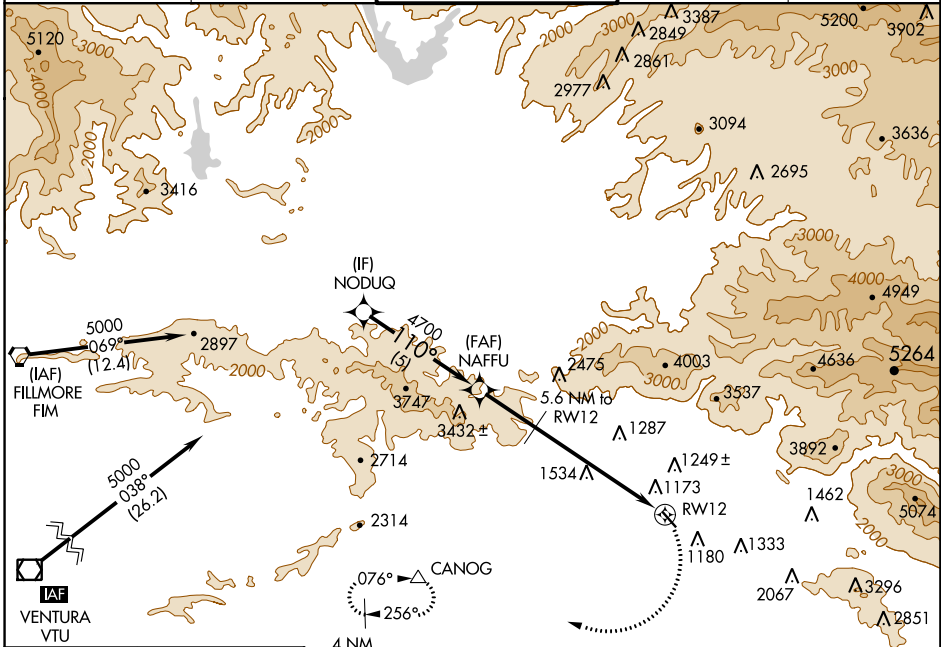
APP CRS 110°	Rwy Idg TDZE Apt Elev	N/A N/A 1003
------------------------	-----------------------------	---

RNAV (GPS)-C

WHITEMAN (WHP)

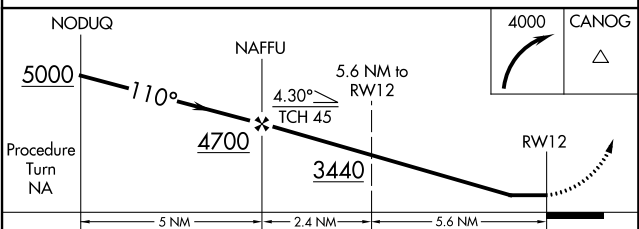
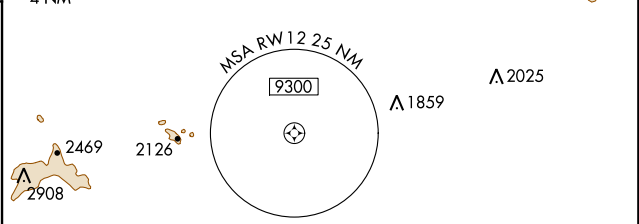
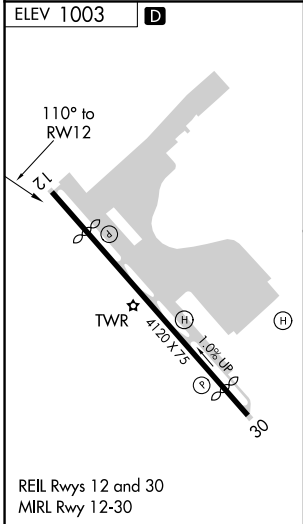
When control tower closed, use Burbank altimeter setting.
NA IAF ARM APPROACH MODE PRIOR TO IAF.
 MISSED APPROACH: Climbing right turn to 4000 direct CANOG and hold.
 GPS or RNP-0.3 required. DME/DME RNP-0.3 NA.

ATIS 132.1	SOCAL APP CON 134.2 338.2	WHITEMAN TOWER * 135.0 (CTAF)	GND CON 125.0	UNICOM 122.95
----------------------	-------------------------------------	---	-------------------------	-------------------------



SW-3, 20 JUL 2017 to 17 AUG 2017

SW-3, 20 JUL 2017 to 17 AUG 2017



CATEGORY	A	B	C	D
CIRCLING	1900-1¼	897 (900-1¼)	1900-2¾ 897 (900-2¾)	NA