

APP CRS <b>263°</b>	Rwy Idg <b>3780</b>
	TDZE <b>632</b>
	Apt Elev <b>634</b>

# RNAV (GPS) RWY 26

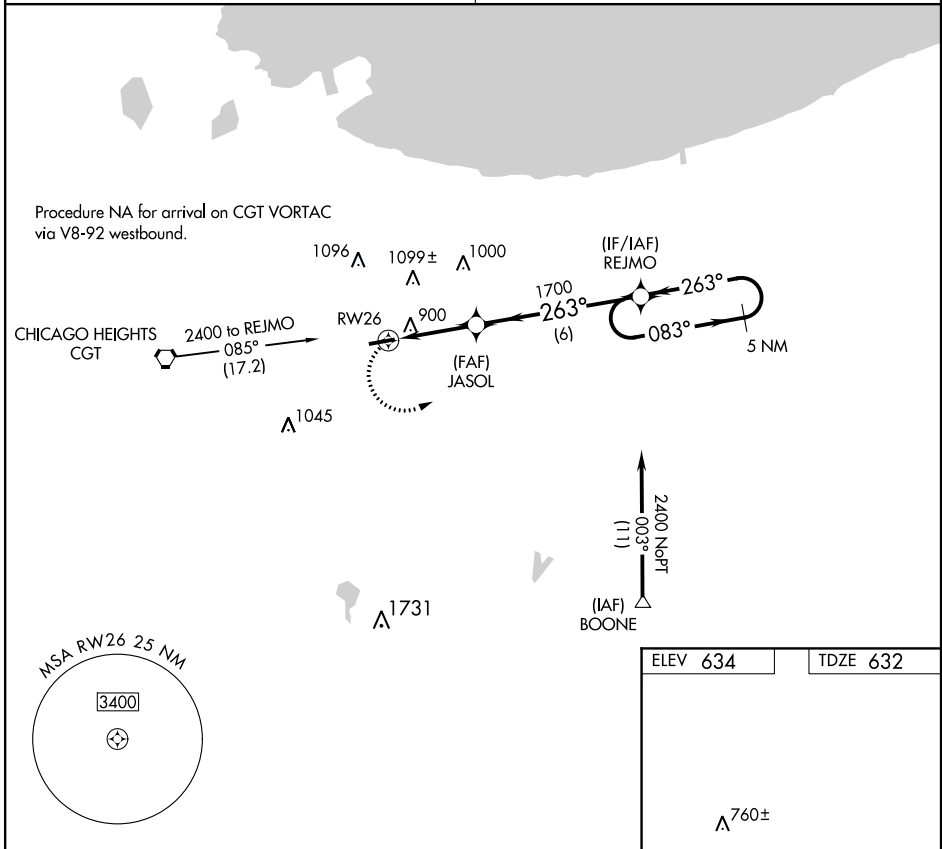
GRIFFITH-MERRILLVILLE (Ø5C)

**▽** DME/DME RNP -0.3 NA. Obtain local altimeter setting on CTAF; when not received use Chicago Midway Inl altimeter setting and increase all MDAs 60 feet. Visibility reduction by helicopters NA.  
**▲** NA

MISSED APPROACH: Climbing left turn to 2400 direct REJMO and hold.

CHICAGO APP CON  
**133.1 285.6**

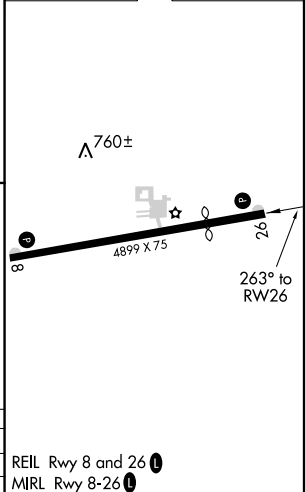
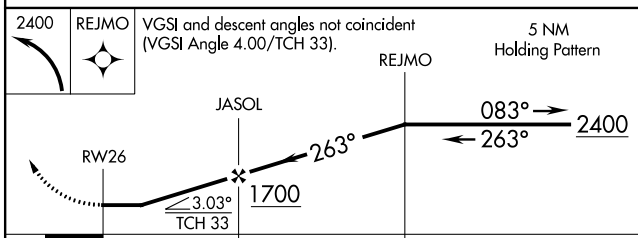
UNICOM  
**123.0 (CTAF) 0**



EC-2, 17 AUG 2017 to 14 SEP 2017

EC-2, 17 AUG 2017 to 14 SEP 2017

ELEV 634	TDZE 632
----------	----------



CATEGORY	A	B	C	D
LNAV MDA	1160-1	528 (600-1)		NA
CIRCLING	1200-1	566 (600-1)		NA

REIL Rwy 8 and 26 0  
MIRL Rwy 8-26 0