

WAAS CH <b>42606</b> <b>W09A</b>	APP CRS <b>092°</b>	Rwy Idg TDZE Apt Elev	<b>6500</b> <b>769</b> <b>770</b>
--	------------------------	-----------------------------	---

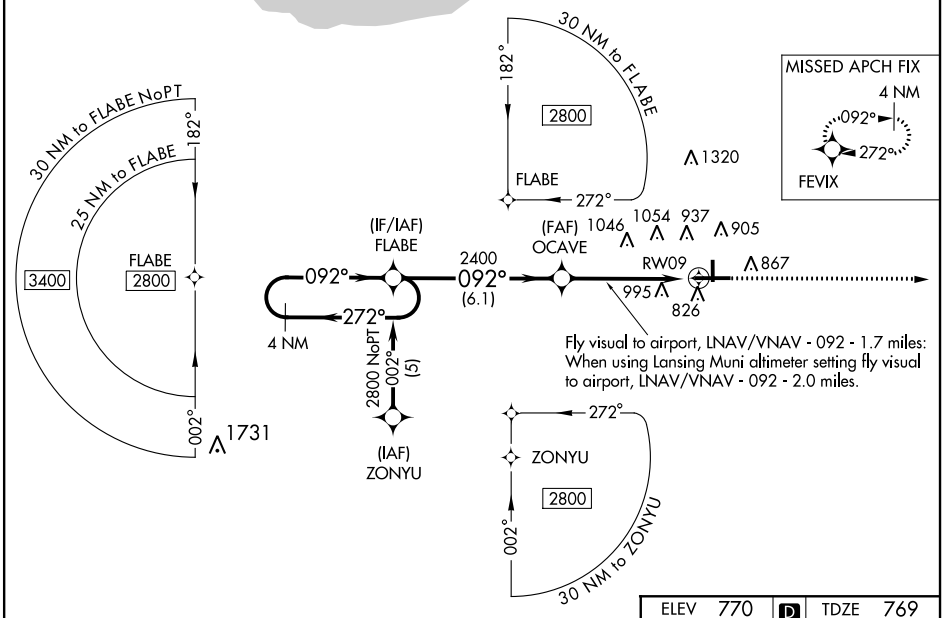
# RNAV (GPS) RWY 9

PORTER COUNTY RGNL (VPZ)

**⚠** When local altimeter setting not received, use Lansing Muni altimeter setting and increase all DA 77 feet and all MDA 80 feet; and increase LPV all Cats, LNAV/VNAV Cat D, LNAV Cats C and D, and Circling Cat C visibility ¼ mile. Baro-VNAV and VDP NA when using Lansing Muni altimeter setting. For uncompensated Baro-VNAV systems, LNAV/VNAV NA below -16°C (4°F) or above 47°C (116°F). DME/DME RNP -0.3 NA. Visibility reduction by helicopters NA.

**⚠** MISSED APPROACH: Climb to 2600 direct FEVIX and hold.

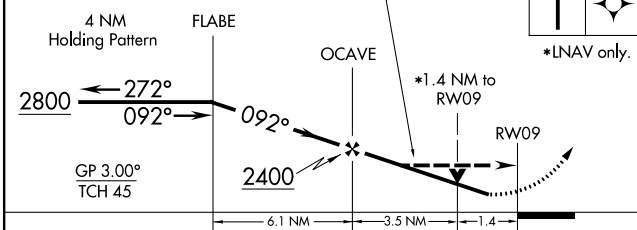
ASOS <b>125.875</b>	SOUTH BEND APP CON * <b>132.05 257.8</b>	CLNC DEL <b>120.525</b>	UNICOM <b>122.725 (CTAF) 0</b>
------------------------	---	----------------------------	-----------------------------------



EC-2, 17 AUG 2017 to 14 SEP 2017

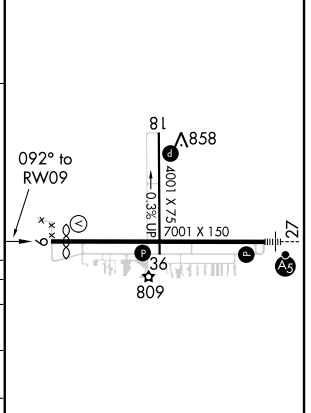
EC-2, 17 AUG 2017 to 14 SEP 2017

Fly visual to airport, LNAV/VNAV - 092 - 1.7 miles: When using Lansing Muni altimeter setting fly visual to airport, LNAV/VNAV - 092 - 2.0 miles.



ELEV 770	<b>D</b>	TDZE 769
----------	----------	----------

CATEGORY	A	B	C	D
LPV DA		1038-1	269 (300-1)	
LNAV/VNAV DA		1369-2	600 (600-2)	
LNAV MDA	1260-1	491 (500-1)	1260-1½ 491 (500-1½)	1260-1½ 491 (500-1½)
CIRCLING	1260-1 490 (500-1)	1300-1 530 (600-1)	1300-1½ 530 (600-1½)	1360-2 590 (600-2)



HIRL Rwy 9-27 **0**  
MIRL Rwy 18-36 **0**  
REIL Rws 9, 18 and 36 **0**