

WAAS CH <b>61002</b> <b>W28A</b>	APP CRS <b>276°</b>	Rwy Idg TDZE Apt Elev	<b>8394</b> <b>7</b> <b>65</b>
--	------------------------	-----------------------------	--------------------------------------

# RNAV (GPS) Y RWY 28R

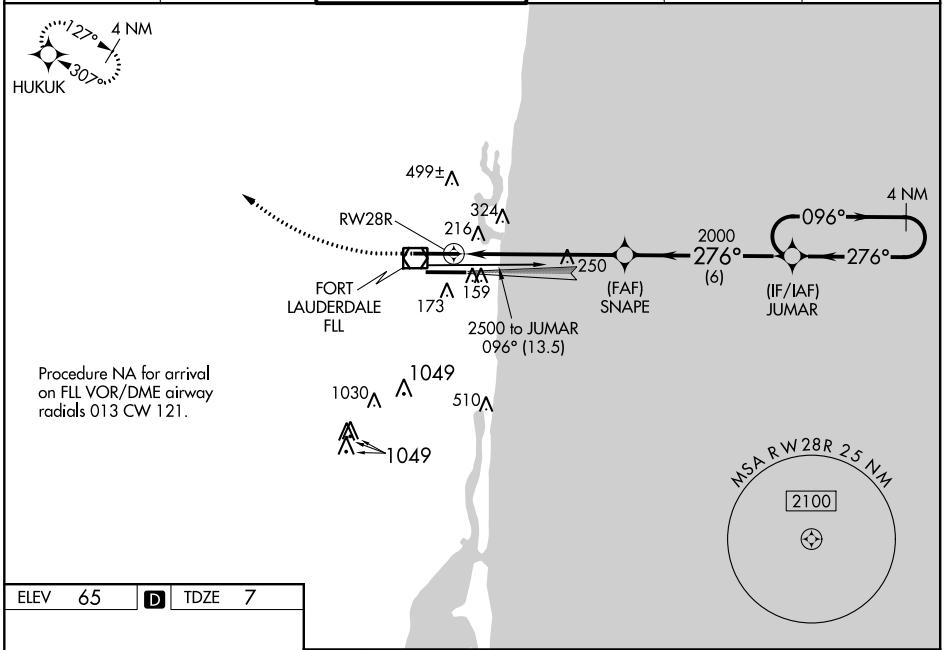
FORT LAUDERDALE/HOLLYWOOD INTL (FLL)

**⚠** For uncompensated Baro-VNAV systems, LNAV/VNAV NA below 5°C (40°F) or above 54°C (130°F). DME/DME RNP-0.3 NA. Inop table does not apply to LPV all Cats. LNAV procedure NA during simultaneous operations. Use of FD or AP providing RNAV track guidance required during simultaneous operations. Simultaneous approach authorized with Rwy 28L.

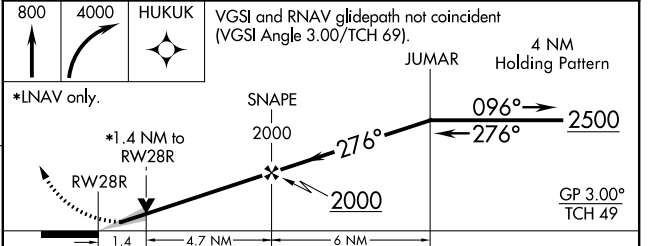
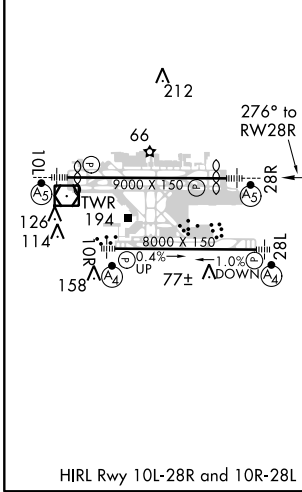
**MALSR**

**MISSED APPROACH:** Climb to 800 then climbing right turn to 4000 direct HUKUK and hold, continue climb-in-hold to 4000.

D-ATIS <b>135.0</b>	MIAMI APP CON <b>133.775 285.6</b>	<b>FORT LAUDERDALE TOWER</b> <b>119.3 257.8</b>	GND CON <b>121.4</b>	CLNC DEL <b>128.4</b>	CPDLC
------------------------	---------------------------------------	--	-------------------------	--------------------------	-------



ELEV 65	<b>D</b>	TDZE 7
---------	----------	--------



CATEGORY	A	B	C	D
LPV DA	257/40		250 (200-¾)	
LNAV/VNAV DA	594-1½		587 (600-1½)	
LNAV MDA	520/24	513 (500-½)	520/55	513 (500-¼)
<b>C</b> CIRCLING	540-1 475 (500-1)	600-1 535 (600-1)	760-2 695 (700-2)	760-2¼ 695 (700-2¼)

SE-3, 14 SEP 2017 to 12 OCT 2017

SE-3, 14 SEP 2017 to 12 OCT 2017