

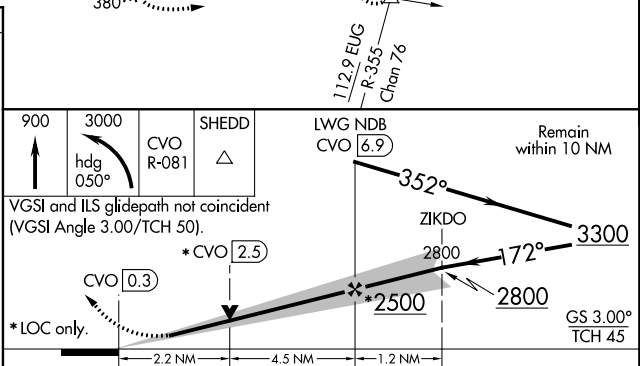
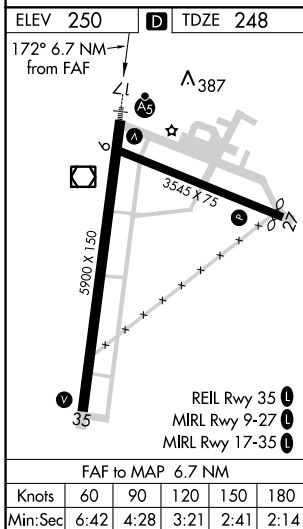
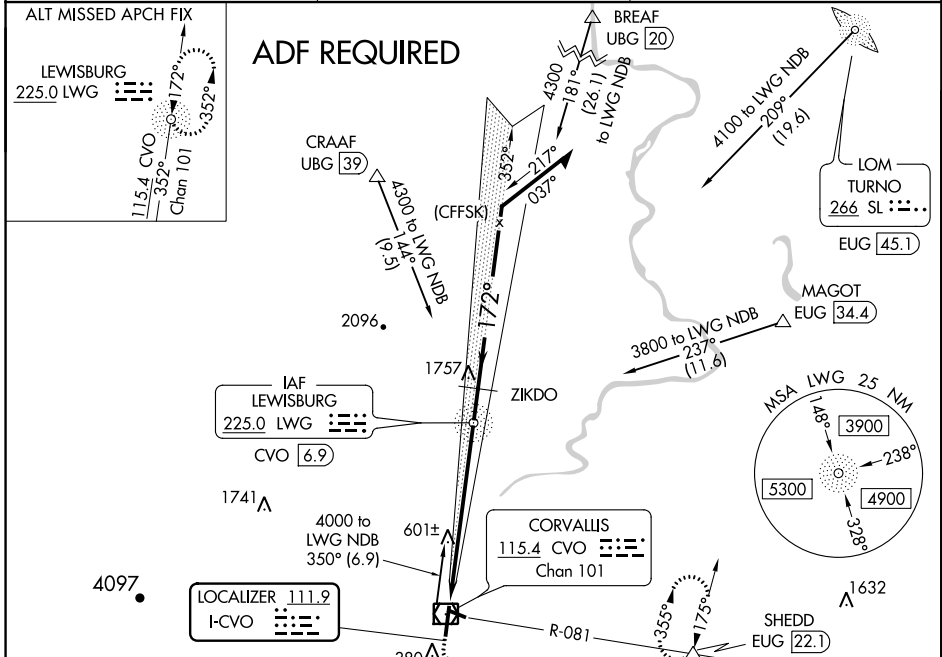
LOC I-CVO <b>111.9</b>	APP CRS <b>172°</b>	Rwy ldg <b>5900</b> TDZE <b>248</b> Apt Elev <b>250</b>
---------------------------	------------------------	--

# ILS or LOC RWY 17

CORVALLIS MUNI (CVO)

<p><b>NA</b> ADF or DME required. For inop ALS, increase S-LOC 17 Cat C/D visibility to 2 SM. When local altimeter setting not received, procedure NA.</p>	<p>MALS R </p>	<p>MISSED APPROACH: Climb to 900 then climbing left turn to 3000 on heading 050° and on CVO VOR/DME R-081 to SHEDD INT/EUG 22.1 DME and hold.</p>
--	----------------	---

AWOS-3 <b>135.775</b>	CASCADE APP CON* <b>127.5 348.7</b>	UNICOM <b>123.075 (CTAF) 0</b>
--------------------------	--	-----------------------------------



CATEGORY	A	B	C	D
S-ILS 17	448-½ 200 (200-½)			
S-LOC 17	1000-½ 752 (800-½)	1000-¾ 752 (800-¾)	1000-1¾ 752 (800-1¾)	752 (800-1¾)
CIRCLING	1000-1 750 (800-1)	1000-1¼ 750 (800-1¼)	1000-2¼ 750 (800-2¼)	1080-2¾ 830 (900-2¾)

NW-1, 14 SEP 2017 to 12 OCT 2017

NW-1, 14 SEP 2017 to 12 OCT 2017