


WAAS CH 78311 W17A	APP CRS 172°	Rwy Idg 5900 TDZE 248 Apt Elev 250
---------------------------------	------------------------	---


RNAV (GPS) RWY 17

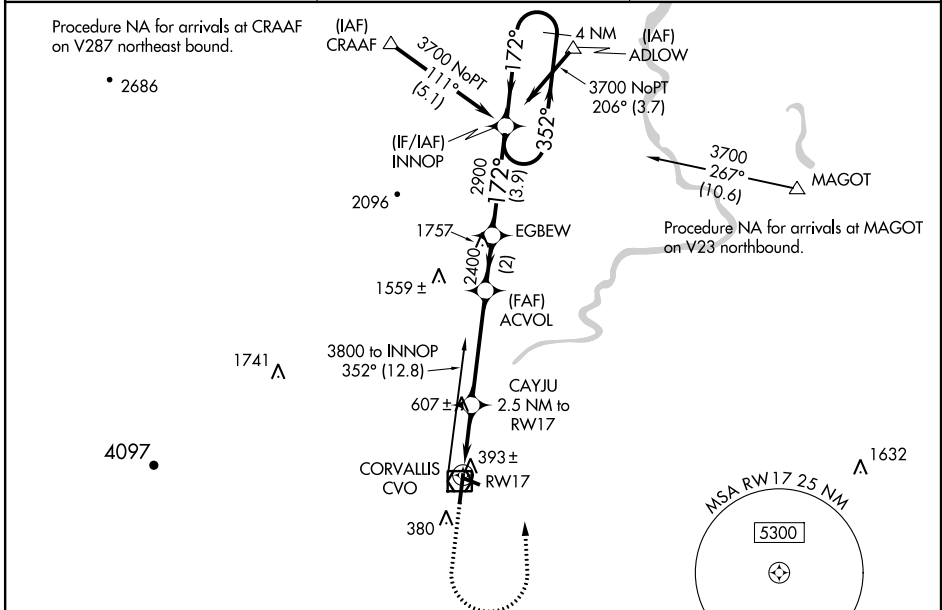
CORVALLIS MUNI (CVO)

NA For uncompensated Baro-VNAV systems, LNAV/VNAV NA below -15°C (5°F) or above 54°C (130°F). DME/DME RNP-0.3 NA. For inop MALSR, increase LNAV/VNAV all Cats visibility to 1 mile and increase LNAV Cat C/D visibility to 1¼ mile. When local altimeter setting not received, procedure NA.

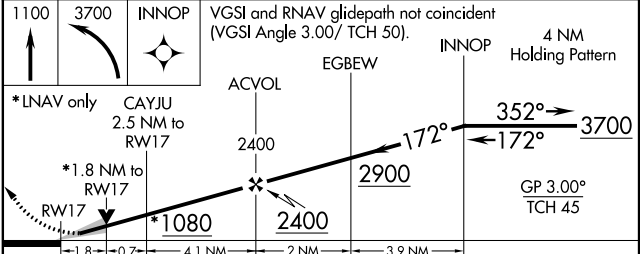
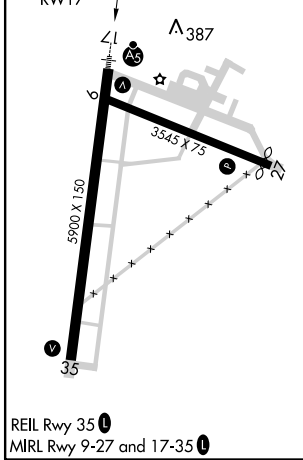
MALSR 

MISSED APPROACH: Climb to 1100 then climbing left turn to 3700 direct INNOP and hold, continue climb-in-hold to 3700.

AWOS-3 135.775	CASCADE APP CON * 127.5 348.7	UNICOM 123.075 (CTAF) 
--------------------------	---	---



ELEV 250	D	TDZE 248
----------	----------	----------



CATEGORY	A	B	C	D
LPV DA		448-½	200 (200-½)	
LNAV/VNAV DA		571-5/8	323 (400-5/8)	
LNAV MDA	860-½ 612 (700-½)		860-1 3/8 612 (700-1 3/8)	
C CIRCLING	860-1 610 (700-1)		920-1 3/4 670 (700-1 3/4)	1080-2 3/4 830 (900-2 3/4)

NW-1, 14 SEP 2017 to 12 OCT 2017

NW-1, 14 SEP 2017 to 12 OCT 2017