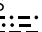
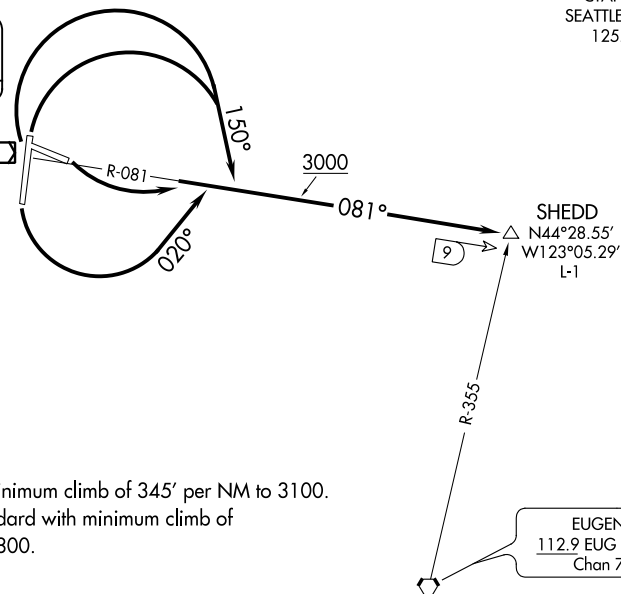


**TOP ALTITUDE:
3000**

AWOS-3 135.775
CASCADE DEP CON *
127.5 348.7
CTAF 123.075
SEATTLE CENTER
125.8 291.7

CORVALLIS
115.4 CVO 
Chan 101
N44°29.97'-W123°17.62'



TAKEOFF MINIMUMS

- Rwys 9, 17: Standard.
- Rwy 27: Standard with minimum climb of 345' per NM to 3100.
- Rwy 35: 400-2¾ or standard with minimum climb of 205' per NM to 800.

TAKEOFF OBSTACLE NOTES

- Rwy 9: Multiple trees beginning 322' from DER, left and right of centerline, up to 163' AGL/ 383' MSL. Railroad beginning 301' from DER, left and right of centerline, up to 34' AGL/264' MSL.
- Rwy 27: OL on GS, 433' from DER, 325' left of centerline, 35' AGL/275' MSL. Tree 39' from DER, 467' right of centerline, 6' AGL/246' MSL.
- Rwy 35: Multiple trees beginning 3' from DER, left and right of centerline, up to 43' AGL/283' MSL.

NOTE: Chart not to scale.

DEPARTURE ROUTE DESCRIPTION

- TAKEOFF RUNWAY 9:** Climbing left turn to 3000 on CVO R-081 to SHEDD INT, thence. . . .
- TAKEOFF RUNWAY 17:** Climbing left turn to 3000 heading 020° and on CVO R-081 to SHEDD INT, thence. . . .
- TAKEOFF RUNWAYS 27 and 35:** Climbing right turn to 3000 heading 150° and on CVO R-081 to SHEDD INT, thence. . . .
-on assigned route/clearance.

LOST COMMUNICATIONS:

If not in contact with ATC upon reaching 3000', continue climb to assigned altitude direct CVO VOR/DME. Thence on assigned route of flight.