

WAAS CH <b>93608</b> <b>W03A</b>	APP CRS <b>038°</b>	Rwy Idg TDZE <b>1450</b> Apt Elev <b>1470</b>
--	------------------------	---

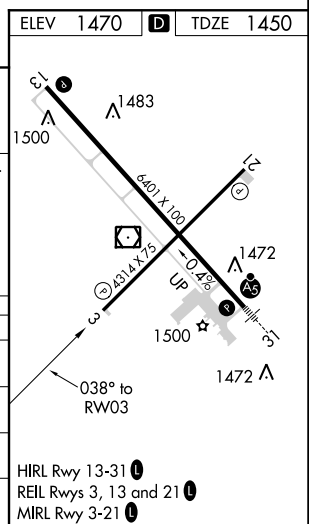
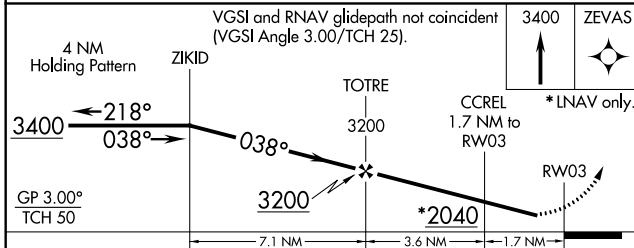
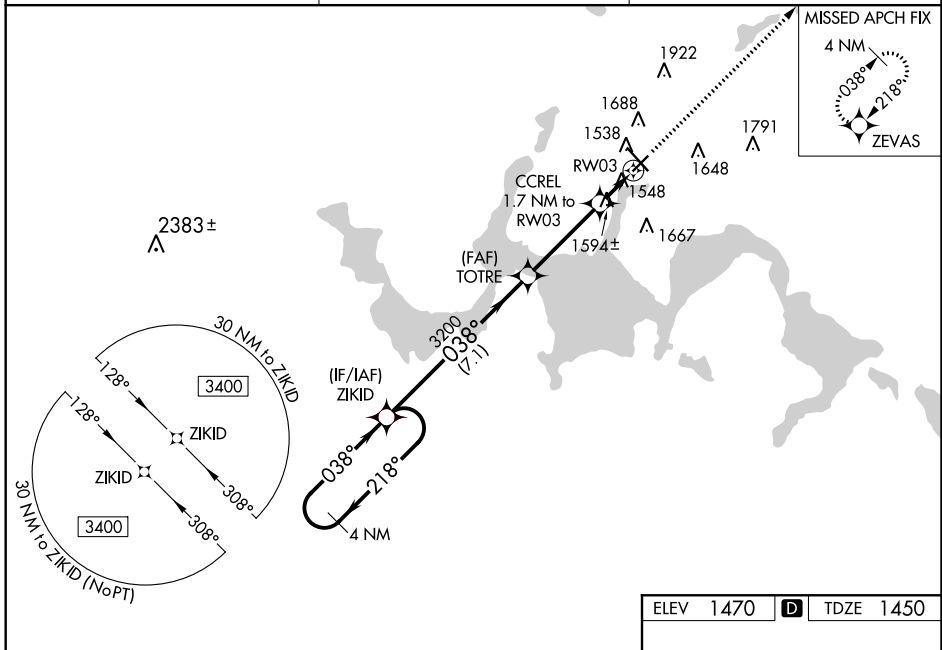
# RNAV (GPS) RWY 3

DEVILS LAKE RGNL (DVL)

**⚠** For uncompensated Baro-VNAV systems, LNAV/VNAV NA below -17°C (2°F) or above 54°C (130°F). DME/DME RNP-0.3 NA. When local altimeter setting not received, use Cando altimeter setting and increase all DA 63 feet, and all MDA 80 feet, increase LNAV/VNAV all Cats visibility 1/8 mile, LNAV and Circling Cat C and D visibility 1/4 mile. Helicopter visibility reduction below 3/8 SM NA. Baro-VNAV NA when using Cando altimeter setting.

MISSED APPROACH: Climb to 3400 direct ZEVAS and hold.

AWOS-3PT <b>125.875</b>	GRAND FORKS RADIO <b>122.3</b>	UNICOM <b>122.8 (CTAF)</b>
----------------------------	-----------------------------------	-------------------------------



CATEGORY	A	B	C	D
LPV DA	1700-1		250 (300-1)	
LNAV/VNAV DA	1714-1		264 (300-1)	
LNAV MDA	1860-1 410 (400-1)		1860-1 1/8 410 (400-1 1/8)	
<b>C</b> CIRCLING	2000-1 530 (600-1)		2240-2 1/4 770 (800-2 1/4) 2240-2 1/2 770 (800-2 1/2)	

NC-1, 14 SEP 2017 to 12 OCT 2017

NC-1, 14 SEP 2017 to 12 OCT 2017