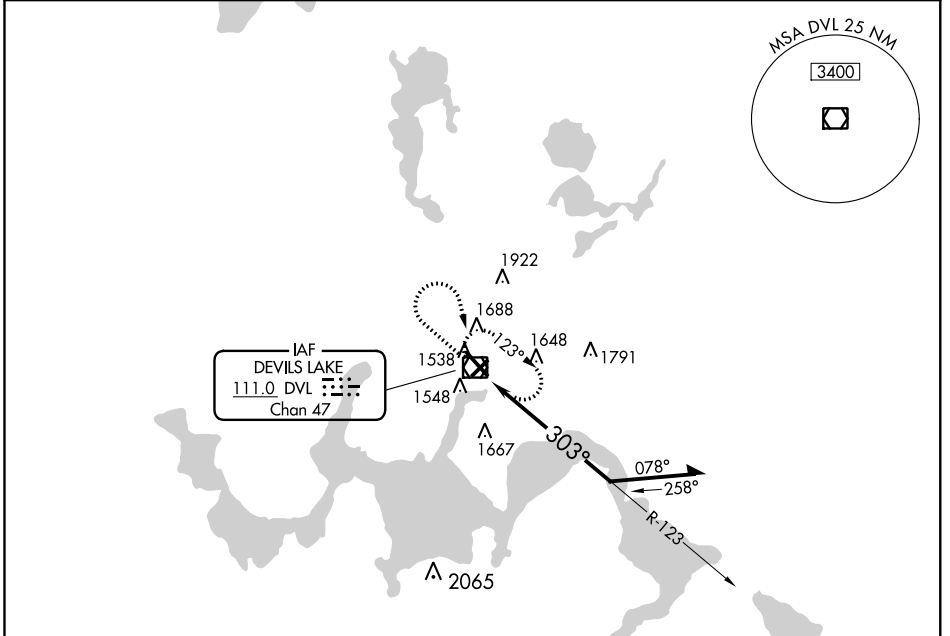


VOR/DME DVL 111.0 Chan 47	APP CRS 303°	Rwy Idg TDZE 1450 Apt Elev 1470
---	------------------------	---

VOR RWY 31
DEVILS LAKE RGNL (DVL)

<p>⚠ When local altimeter setting not received, use Cando altimeter setting and increase all MDA 80 feet, increase S-31 Cats C and D visibility 1/8 mile, and Circling Cats C and D visibility 1/4 mile.</p>	<p>MALSR AS</p>	<p>MISSED APPROACH: Climb to 3200 then right turn direct DVL VOR/DME and hold.</p>
---	----------------------------	--

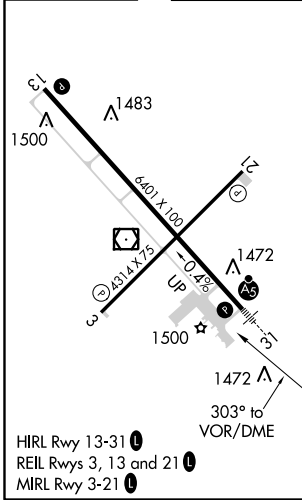
<p>AWOS-3PT 125.875</p>	<p>GRAND FORKS RADIO 122.3</p>	<p>UNICOM 122.8 (CTAF)</p>
------------------------------------	---	---------------------------------------



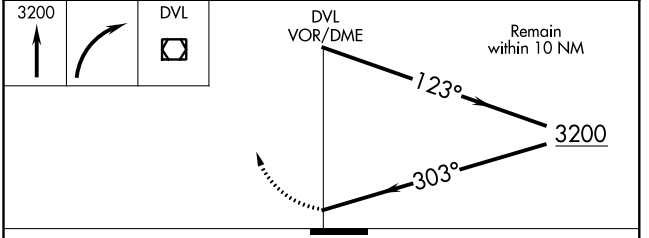
NC-1, 14 SEP 2017 to 12 OCT 2017

NC-1, 14 SEP 2017 to 12 OCT 2017

ELEV 1470	D	TDZE 1450
-----------	----------	-----------



<p>3200</p> <p>↑</p>	<p>DVL</p> <p>☐</p>
----------------------	---------------------



CATEGORY	A	B	C	D
S-31	2020-1/2 570 (600-1/2)		2020-1/4 570 (600-1/4)	
C CIRCLING	2020-1 550 (600-1)		2240-2 1/4 770 (800-2 1/4)	2240-2 1/2 770 (800-2 1/2)