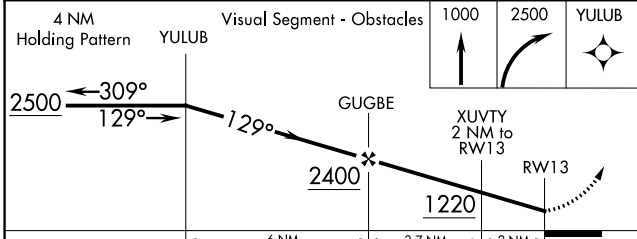
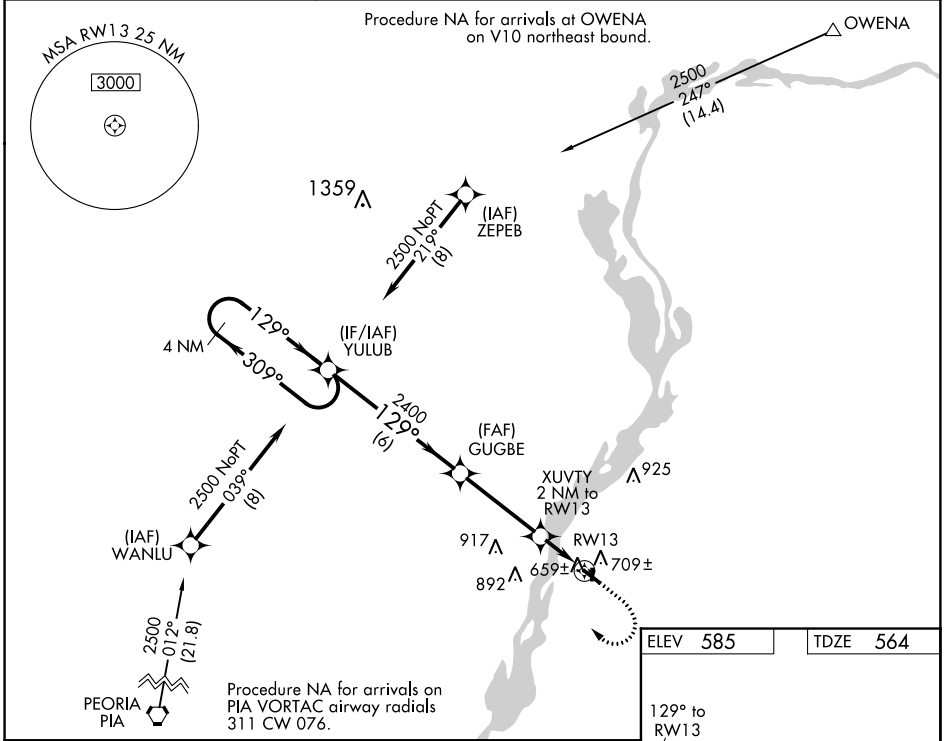


WAAS CH <b>66035</b> W13A	APP CRS <b>129°</b>	Rwy Idg <b>4003</b> TDZE <b>564</b> Apt Elev <b>585</b>
---------------------------------	------------------------	---

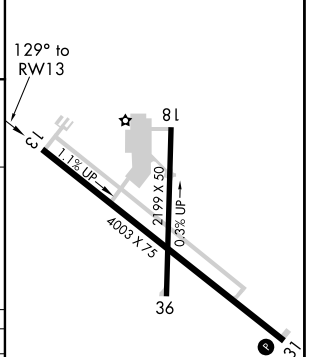
# RNAV (GPS) RWY 13

MARSHALL COUNTY (C75)

<p><b>⚠</b> DME/DME RNP-0.3 NA. Helicopter visibility reduction below ¾ SM NA. When local altimeter setting not received, use Peru altimeter setting and increase all MDA 80 feet and increase LP and Circling Cat C visibilities ¼ mile and LNAV Cat C visibility ½ mile. Night landing: Rwy 18, 31, 36 NA.</p>		<p>MISSED APPROACH: Climb to 1000 then climbing right turn to 2500 direct YULUB and hold.</p>
<p>AWOS-3 <b>119.425</b></p>	<p>CHICAGO CENTER <b>124.55 398.9</b></p>	<p>UNICOM <b>122.8 (CTAF)</b></p>



ELEV 585	TDZE 564
----------	----------



CATEGORY	A	B	C	D
LP MDA	920-1	356 (400-1)	920-1½ 356 (400-1½)	NA
LNAV MDA	960-1	396 (400-1)	960-1¼ 396 (400-1¼)	NA
<b>C</b> CIRCLING	1100-1	515 (600-1)	1200-1¾ 615 (700-1¾)	NA

REIL Rwy 13  
MIRL Rwy 13-31  
LIRL Rwy 18-36

EC-3, 14 SEP 2017 to 12 OCT 2017

EC-3, 14 SEP 2017 to 12 OCT 2017