

APP CRS	Rwy Idg	<b>7000</b>
<b>259°</b>	TDZE	<b>5537</b>
	Apt Elev	<b>5537</b>

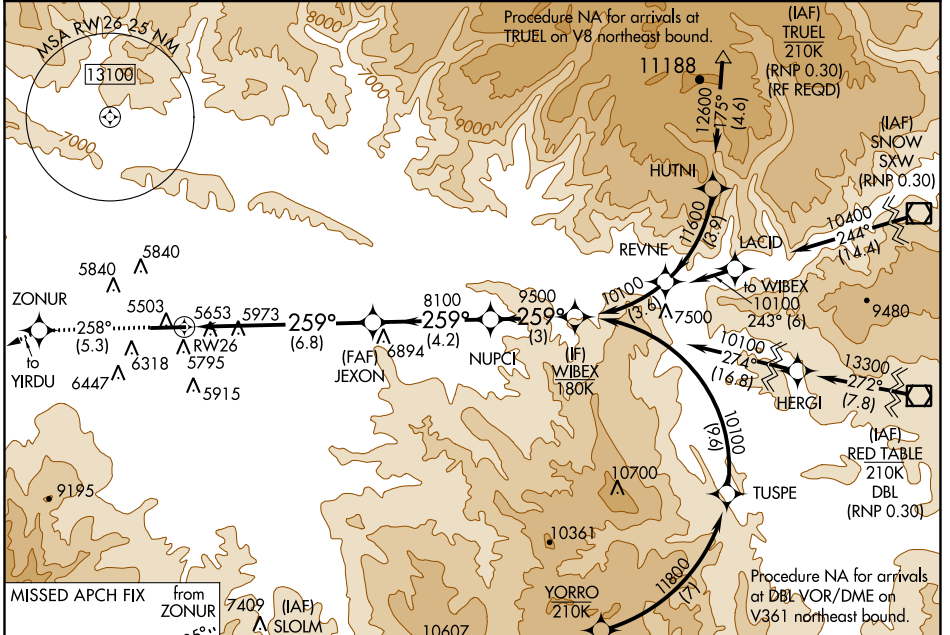
# RNAV (RNP) Y RWY 26

RIFLE GARFIELD COUNTY (RIL)

When VGSI inoperative, procedure NA at night. For uncompensated Baro-VNAV systems, procedure NA below -24°C (-11°F) or above 38°C (100°F).  
 -15°C/5°F  
 GPS required.

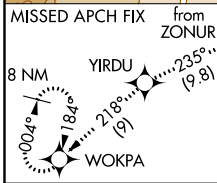
**ODALS**  
 MISSED APPROACH: Climb to 13000 on track 258° to ZONUR and track 235° to YIRDU and track 218° to WOKPA and hold, continue climb-in-hold to 13000.

ASOS <b>135.275</b>	DENVER CENTER <b>134.95 327.075</b>	UNICOM <b>122.8 (CTAF) 0</b>
------------------------	--	---------------------------------



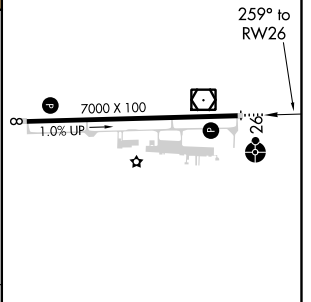
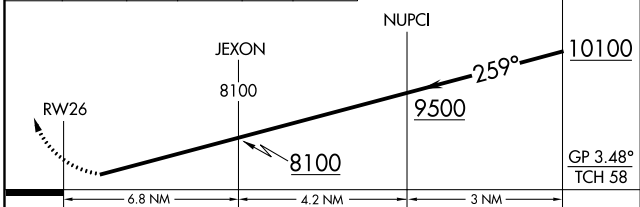
SW-1, 14 SEP 2017 to 12 OCT 2017

SW-1, 14 SEP 2017 to 12 OCT 2017



ELEV 5537	TDZE 5537
-----------	-----------

13000	ZONUR	YIRDU	WOKPA
tr 258°	tr 235°	tr 218°	



CATEGORY	A	B	C	D
RNP 0.30 DA	6387-2½		850 (900-2½)	NA

## AUTHORIZATION REQUIRED

HIRL Rwy 8-26 0  
 REIL Rwy 8 0