

APP CRS	Rwy Idg	7000
259°	THRE	5537
	Apt Elev	5537

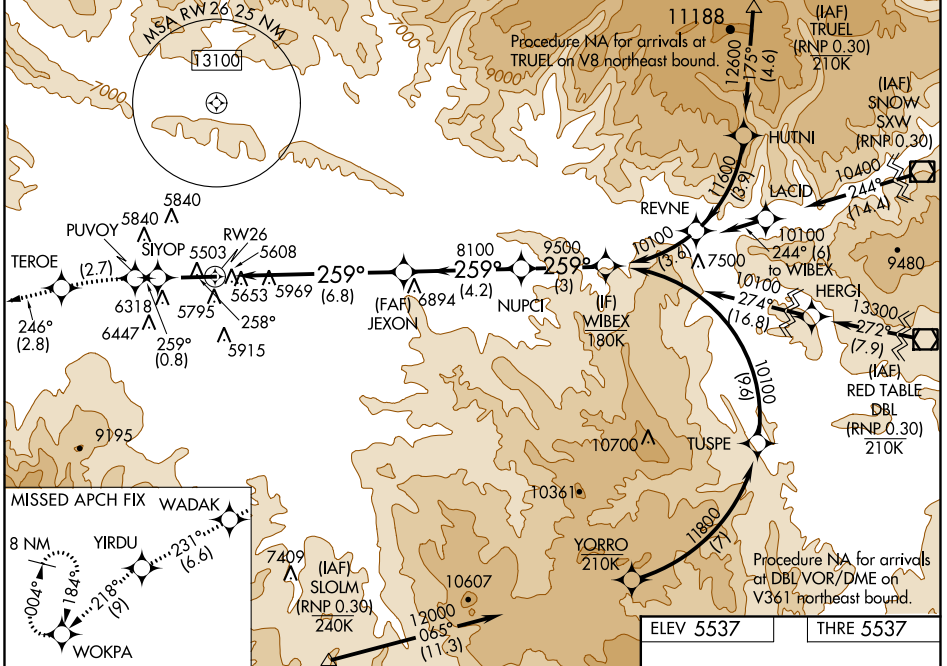
RNAV (RNP) Z RWY 26

RIFLE GARFIELD COUNTY (RIL)

When VGSJ inoperative, procedure NA at night. RF required. GPS required. Missed approach requires RNP less than 1.0. For uncompensated Baro-VNAV systems, procedure NA below -24°C (-11°F) or above 38°C (100°F). * Missed approach requires minimum climb of 398 feet per NM to 9100.

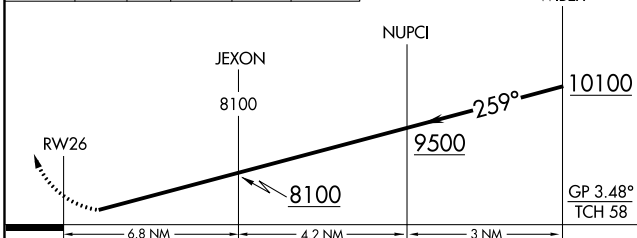
MISSED APPROACH: Climb to 13000 on track 258° to SIYOP and track 259° to PUVOY left turn to TEROE and track 246° to WADAK and track 231° to YIRDU and track 218° to WOKPA and hold, continue climb-in-hold to 13000.

ASOS 135.275	DENVER CENTER 134.95 327.075	UNICOM 122.8 (CTAF)
------------------------	--	-------------------------------



SW-1, 14 SEP 2017 to 12 OCT 2017

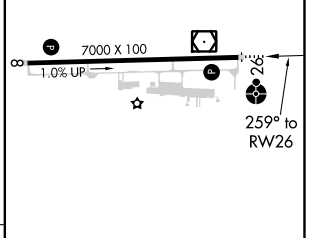
SW-1, 14 SEP 2017 to 12 OCT 2017



ELEV 5537	THRE 5537
-----------	-----------

CATEGORY	A	B	C	D
RNP 0.10 DA*	5955-1	418 (500-1)		NA
RNP 0.30 DA	6387-2½	850 (900-2½)		NA

AUTHORIZATION REQUIRED



HIRL Rwy 8-26
REIL Rwy 8