

AGUDE FIVE ARRIVAL

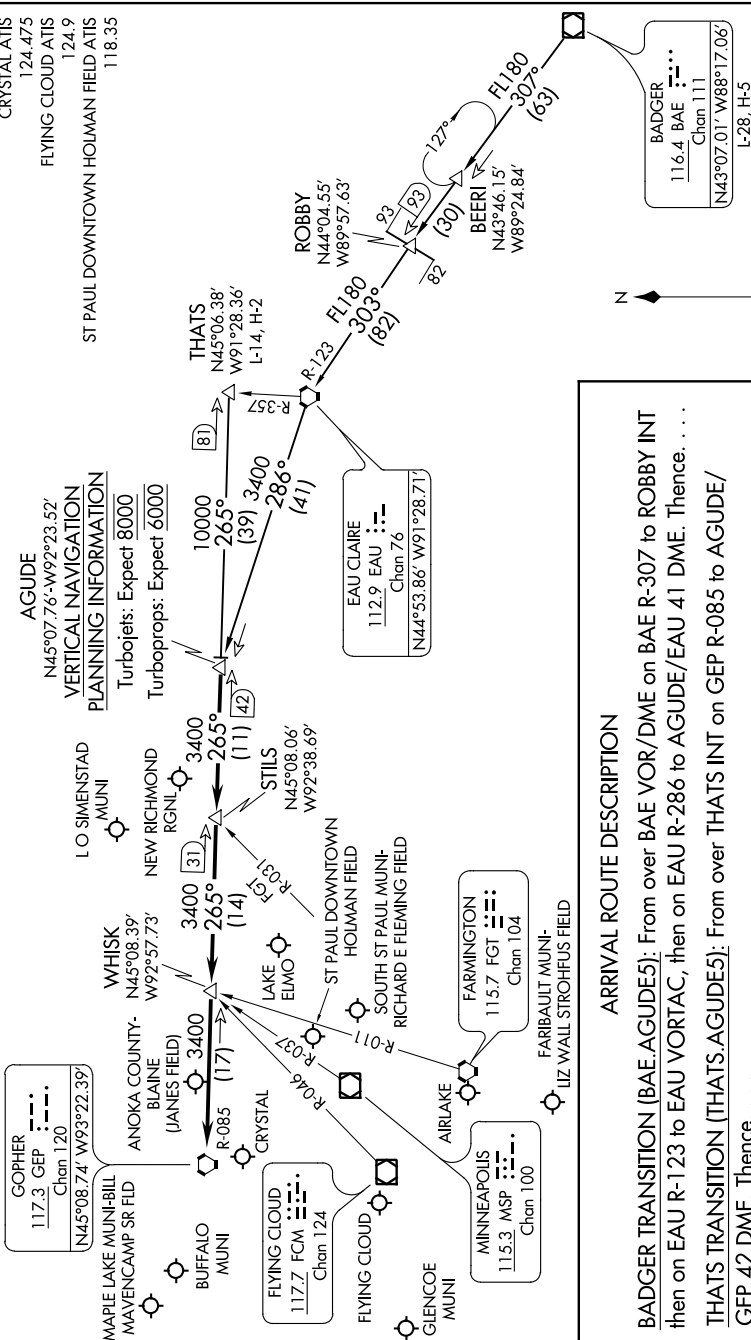
AL-263 (FAA)

MINNEAPOLIS-ST PAUL, MINNESOTA

NC-1, 12 OCT 2017 to 09 NOV 2017

MINNEAPOLIS APP CON
121.2 335.5
ANOKA COUNTY BLAINE (JANES FIELD) ATIS
120.625
CRYSTAL ATIS
124.475
FLYING CLOUD ATIS
124.9
ST PAUL DOWNTOWN HOLMAN FIELD ATIS
118.35

AGUDE
N45°07.76'-W92°23.52'
VERTICAL NAVIGATION
PLANNING INFORMATION
Turbolojets: Expect 8000
Turboprops: Expect 6000



NOTE: Chart not to scale.
NOTE: DME and RADAR required.

ARRIVAL ROUTE DESCRIPTION

BADGER TRANSITION (BAE.AGUDE5): From over BAE VOR/DME on BAE R-307 to ROBBERY INT then on EAU R-123 to EAU VORTAC, then on EAU R-286 to AGUDE/EAU 41 DME. Thence. . . .

THATS TRANSITION (THATS.AGUDE5): From over THATS INT on GEP R-085 to AGUDE/ GEP 42 DME. Thence. . . .

. . . . From over AGUDE/GEP 42 DME via GEP R-085 to GEP VORTAC, then expect RADAR vectors to final approach course.

NC-1, 12 OCT 2017 to 09 NOV 2017