

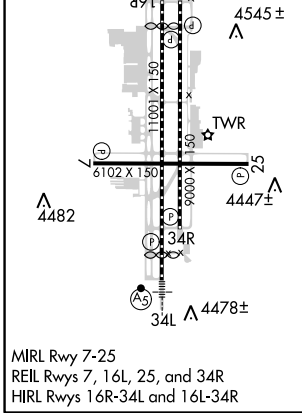
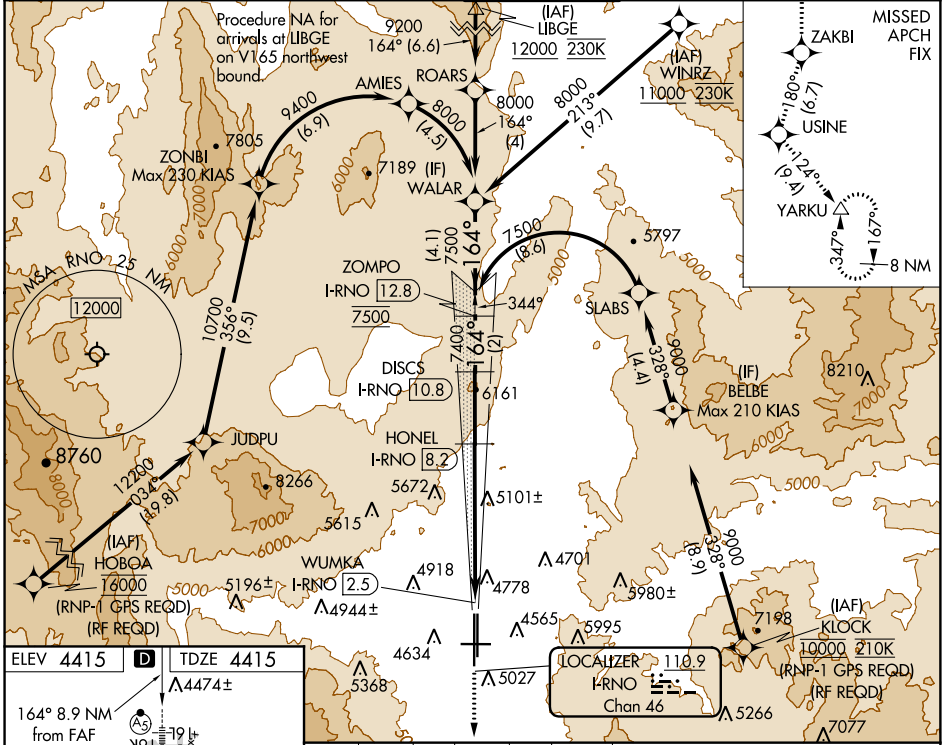
LOC/DME I-RNO <b>110.9</b> Chan <b>46</b>	APP CRS <b>164°</b>	Rwy Idg <b>10011</b> TDZE <b>4415</b> Apt Elev <b>4415</b>
---	------------------------	--

# ILS Z or LOC Z RWY 16R

RENO/TAHOE INTL (RNO)

<p>Circling to Rwy 25 NA at night. DME/DME RNP-0.3 NA. DME required. RNAV 1-GPS required. # For inop MALSR, increase S-ILS 16R all Cats visibility to 2 1/2 mile.</p>	MALSR 	MISSED APPROACH: Climb to 13000 on the RNAV missed approach route to YARKU and hold, continue climb-in-hold to 13000. † Missed approach requires a minimum climb of 390 feet per NM to 8000.
	Procedure NA for arrivals at LIBGE on V165 northwest bound.	

D-ATIS <b>135.8 363.0</b>	NORCAL APP CON <b>119.2 279.55 126.3 353.9</b>	RENO TOWER <b>118.7 257.8</b>	GND CON <b>121.9 348.6</b>	CLNC DEL <b>124.9 370.85</b>
------------------------------	---	----------------------------------	-------------------------------	---------------------------------



ELEV 4415	TDZE 4415	164° 8.9 NM from FAF	
13000 ZAKBI ↑	USINE ✦	YARKU △	VGSI and ILS glidepath not coincident (VGSI Angle 3.06/TCH 77).
See planview for multiple IF locations.			
WUMKA I-RNO [2.5]	HONEL I-RNO [8.2]	ZOMPO I-RNO [12.8]	WALAR
*LOC only.			
CATEGORY	A	B	C
S-ILS 16R †		4615/24	200 (200-1/2)
S-ILS 16R #		5138-1 7/8	723 (800-1 7/8)
S-LOC 16R	5420/40 1005 (1100-3/4)	5420/55 1005 (1100-1 1/4)	5420-2 1/2 1005 (1100-2 1/2)
CIRCLING	5420-1 1/4 1005 (1100-1 1/4)	5420-1 1/2 1005 (1100-1 1/2)	6480-3 2065 (2100-3)

SW-4, 12 OCT 2017 to 09 NOV 2017

SW-4, 12 OCT 2017 to 09 NOV 2017