

HI-TACAN RWY 31

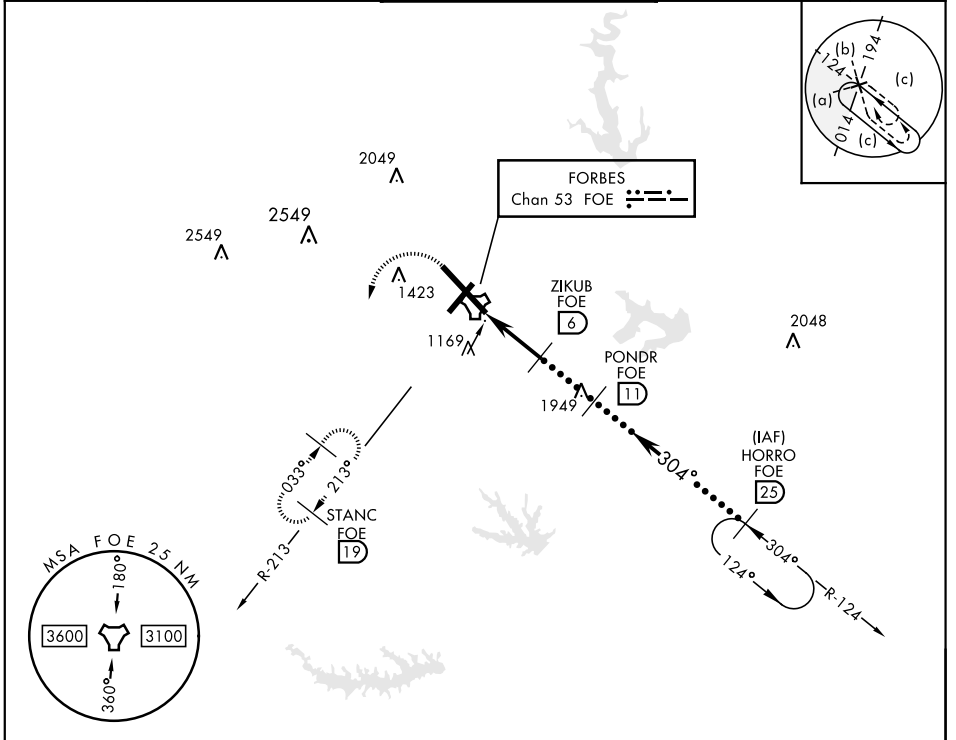
TACAN Chan 53	FOE	APCH CRS 304°	Rwy ldg TDZE 1037 Arprt Elev 1078
-------------------------	-----	-------------------------	---

JAL-424 [USAF]

TOPEKA RGNL (KFOE)

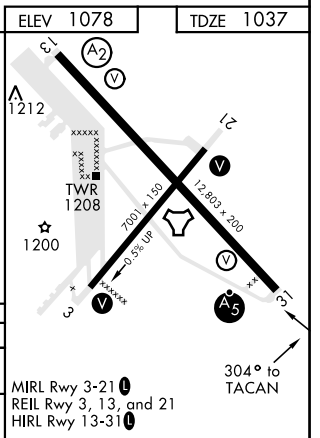
<p>▼ * For ALS inop, increase CAT CDE vis to 1 3/8.</p>	<p>MALSRL A5</p> 	<p>MISSED APPROACH: Climbing left turn to 3000 via heading 190° and FOE TACAN R-213 to STANC/19° DME and hold.</p>

<p>ATIS 128.25</p>	<p>KANSAS CITY CENTER 123.8 343.7</p>	<p>FORBES TOWER ★ 120.8 (CTAF) 340.2</p>	<p>GND CON 121.7 275.8</p>	<p>ASOS</p>
-------------------------------	--	---	---------------------------------------	-------------



EMERG SAFE ALT 100 NM 3600

<p>3000 FOE R-213</p> <p>STANC FOE 19</p> <p>TACAN</p> <p>BUMKE 2.1</p> <p>ZIKUB 6</p> <p>PONDNR 11</p> <p>HORRO R-124 25</p> <p>FL 250 10,000</p> <p>2700</p> <p>3000</p> <p>2.90° TCH 58</p> <p>5.2 NM</p>	<p>ELEV 1078</p> <p>TDZE 1037</p> <p>A2</p> <p>A1</p> <p>A3</p> <p>A4</p> <p>A5</p> <p>A6</p> <p>A7</p> <p>A8</p> <p>A9</p> <p>A10</p> <p>A11</p> <p>A12</p> <p>A13</p> <p>A14</p> <p>A15</p> <p>A16</p> <p>A17</p> <p>A18</p> <p>A19</p> <p>A20</p> <p>A21</p> <p>A22</p> <p>A23</p> <p>A24</p> <p>A25</p> <p>A26</p> <p>A27</p> <p>A28</p> <p>A29</p> <p>A30</p> <p>A31</p> <p>A32</p> <p>A33</p> <p>A34</p> <p>A35</p> <p>A36</p> <p>A37</p> <p>A38</p> <p>A39</p> <p>A40</p> <p>A41</p> <p>A42</p> <p>A43</p> <p>A44</p> <p>A45</p> <p>A46</p> <p>A47</p> <p>A48</p> <p>A49</p> <p>A50</p> <p>A51</p> <p>A52</p> <p>A53</p> <p>A54</p> <p>A55</p> <p>A56</p> <p>A57</p> <p>A58</p> <p>A59</p> <p>A60</p> <p>A61</p> <p>A62</p> <p>A63</p> <p>A64</p> <p>A65</p> <p>A66</p> <p>A67</p> <p>A68</p> <p>A69</p> <p>A70</p> <p>A71</p> <p>A72</p> <p>A73</p> <p>A74</p> <p>A75</p> <p>A76</p> <p>A77</p> <p>A78</p> <p>A79</p> <p>A80</p> <p>A81</p> <p>A82</p> <p>A83</p> <p>A84</p> <p>A85</p> <p>A86</p> <p>A87</p> <p>A88</p> <p>A89</p> <p>A90</p> <p>A91</p> <p>A92</p> <p>A93</p> <p>A94</p> <p>A95</p> <p>A96</p> <p>A97</p> <p>A98</p> <p>A99</p> <p>A100</p>
<p>CATEGORY</p>	<p>C</p> <p>D</p> <p>E</p>
<p>S-31*</p>	<p>1520/50 483 (500-1)</p>
<p>CIRCLING</p>	<p>1580-1 1/2 502 (600-1 1/2)</p> <p>1700-2 622 (700-2)</p> <p>1720-2 1/4 642 (700-2 1/4)</p>



HI-TACAN RWY 31

NC-2, 12 OCT 2017 to 09 NOV 2017

NC-2, 12 OCT 2017 to 09 NOV 2017