

LOC/DME I-FOE <b>110.1</b> Chan <b>38</b>	APP CRS <b>312°</b>	Rwy Idg <b>12803</b> TDZE <b>1037</b> Apt Elev <b>1078</b>
---	------------------------	--

# ILS or LOC RWY 31

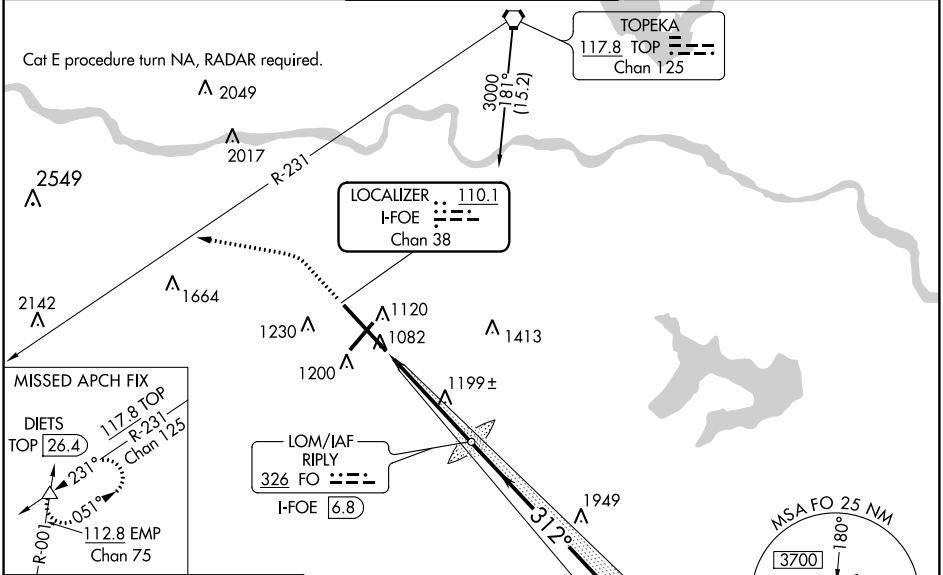
TOPEKA RGNL (F/OE)

⚠ When local altimeter setting not received, use Phillip Billard Muni altimeter setting and increase DA 45 feet and all MDA 60 feet, increase S-31 Cat E visibility to RVR 6000, S-LOC Cat E visibility to 1¼ and Circling Cat E visibility to 2½. VDP NA with Phillip Billard altimeter setting. For inoperative MALSR, increase S-ILS 31 Cat E visibility to RVR 4000; and S-LOC Cat D visibility to RVR 6000, Cat E to 1½. \* Visibility Cat A/B/C/D RVR 1800 authorized with the use of FD or AP or HUD to DA.

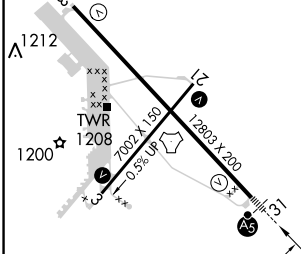


MISSED APPROACH: Climb to 1900 then climbing left turn to 3700 heading 275° and TOP R-231 to DIETS INT/TOP 26.4 DME and hold.

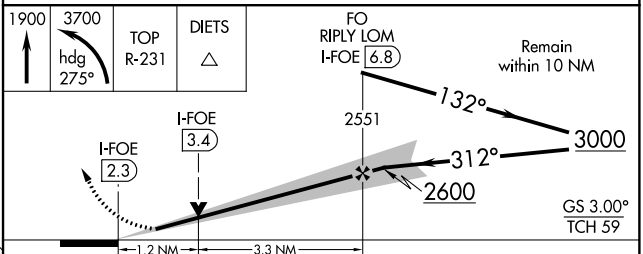
ATIS <b>128.25</b>	KANSAS CITY CENTER <b>123.8 343.7</b>	FORBES TOWER* <b>120.8 (CTAF) 340.2</b>	GND CON <b>121.7 275.8</b>	UNICOM <b>122.95</b>
-----------------------	--	--	-------------------------------	-------------------------



ELEV 1078	D	TDZE 1037
-----------	---	-----------



Knots	60	90	120	150	180
Min:Sec	4:30	3:00	2:15	1:48	1:30



CATEGORY	A	B	C	D	E
S-ILS 31	*1237/24 200 (200-½)				
S-LOC 31	1460/24	423 (400-½)	1460/40 423 (400-¾)	1460/50	423 (400-1)
CIRCLING	1520-1 442 (500-1)	1580-1 502 (600-1)	1580-1½ 502 (600-1½)	1700-2 622 (700-2)	1720-2¼ 642 (700-2¼)

NC-2, 12 OCT 2017 to 09 NOV 2017

NC-2, 12 OCT 2017 to 09 NOV 2017