

WAAS CH <b>66100</b> <b>W13A</b>	APP CRS <b>132°</b>	Rwy Idg <b>12803</b> TDZE <b>1065</b> Apt Elev <b>1078</b>
--	------------------------	--

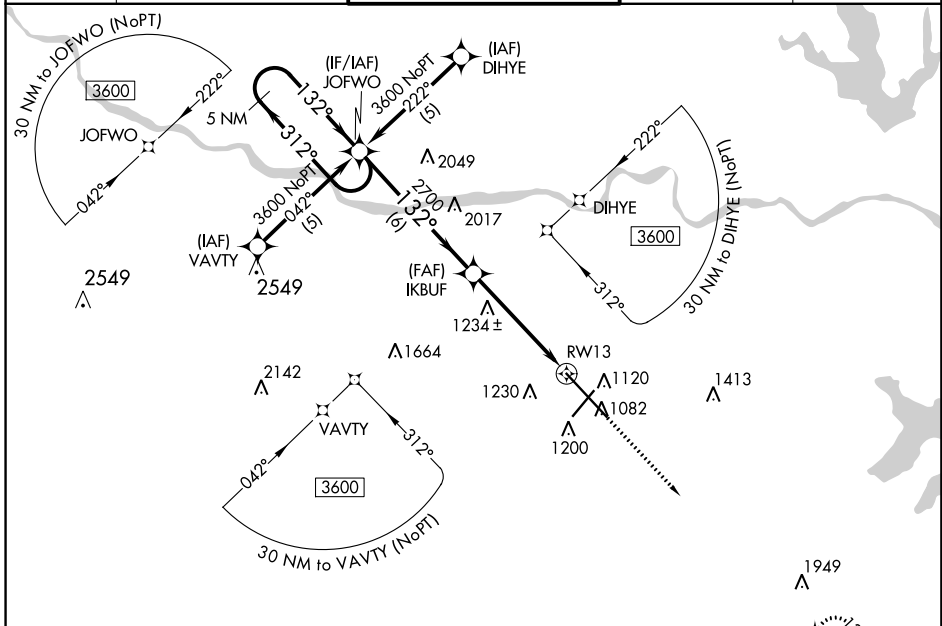
# RNAV (GPS) RWY 13

TOPEKA RGNL (F/OE)

**⚠** If local altimeter setting not received, use Philip Billard Muni altimeter setting and increase all DAs/MDAs 60 feet. Baro-VNAV and VDP NA when using Philip Billard Muni altimeter setting. Baro-VNAV NA below -17°C (2°F). DME/DME RNP-0.3 NA. Inoperative table does not apply to LPV, LNAV/VNAV and LNAV Cat C.

**MISSED APPROACH:** Climb to 3000 direct ERJAG and hold.

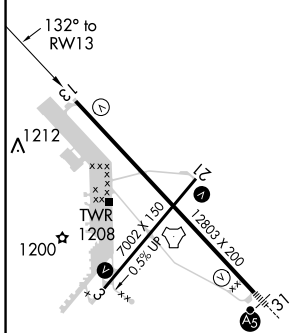
ATIS <b>128.25</b>	KANSAS CITY CENTER <b>123.8 343.7</b>	FORBES TOWER* <b>120.8 (CTAF) 340.2</b>	GND CON <b>121.7 275.8</b>	UNICOM <b>122.95</b>
-----------------------	--	--	-------------------------------	-------------------------



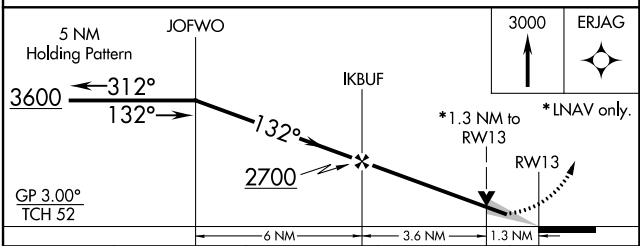
NC-2, 12 OCT 2017 to 09 NOV 2017

NC-2, 12 OCT 2017 to 09 NOV 2017

ELEV 1078	<b>D</b>	TDZE 1065
-----------	----------	-----------



REIL Rwy 3, 13 and 21  
MIRL Rwy 3-21  
HIRL Rwy 13-31



CATEGORY	A	B	C	D
LPV DA		1315-¾	250 (300-¾)	
LNAV/VNAV DA		1505-1½	440 (500-1½)	
LNAV MDA	1540-¾	475 (500-¾)	1540-1¼ 475 (500-1¼)	1540-1½ 475 (500-1½)
<b>C</b> CIRCLING	1540-1 462 (500-1)	1580-1 502 (600-1)	1580-1½ 502 (600-1½)	1700-2 622 (700-2)