

TACAN FOE Chan 53 (111.6)	APP CRS 138°	Rwy Idg 12803 TDZE 1065 Apt Elev 1078
---	------------------------	--

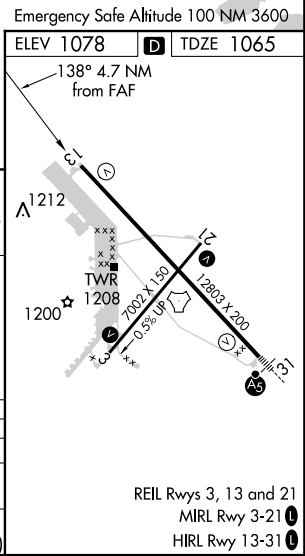
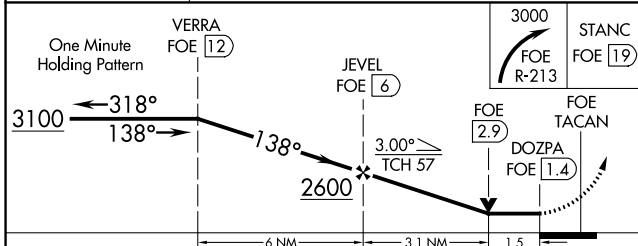
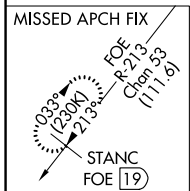
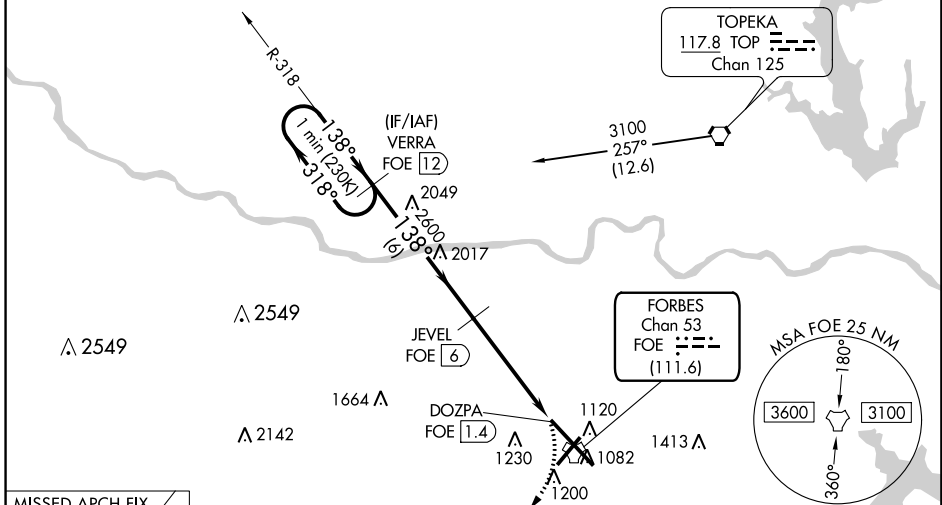
TACAN RWY 13

TOPEKA RGNL (F'OE)

▼ For inoperative ALS, increase S-13 Cats D/E visibility ¼ SM.
 ▲ NA MISSED APPROACH: Climbing right turn to 3000 on FOE TACAN R-213 to STANC/FOE 19 DME and hold.

ATIS 128.25	KANSAS CITY CENTER 123.8 343.7	FORBES TOWER* 120.8 (CTAF) 340.2	GND CON 121.7 275.8	UNICOM 122.95
-----------------------	--	--	-------------------------------	-------------------------

NOT FOR CIVIL USE



CATEGORY	A	B	C	D	E
S-13	1600-¾ 535 (600-¾)		1600-1¼ 535 (600-1¼)		
CIRCLING	1600-1 522 (600-1)		1600-1½ 522 (600-1½)	1700-2 622 (700-2)	1720-2½ 642 (700-2½)

NC-2, 12 OCT 2017 to 09 NOV 2017

NC-2, 12 OCT 2017 to 09 NOV 2017