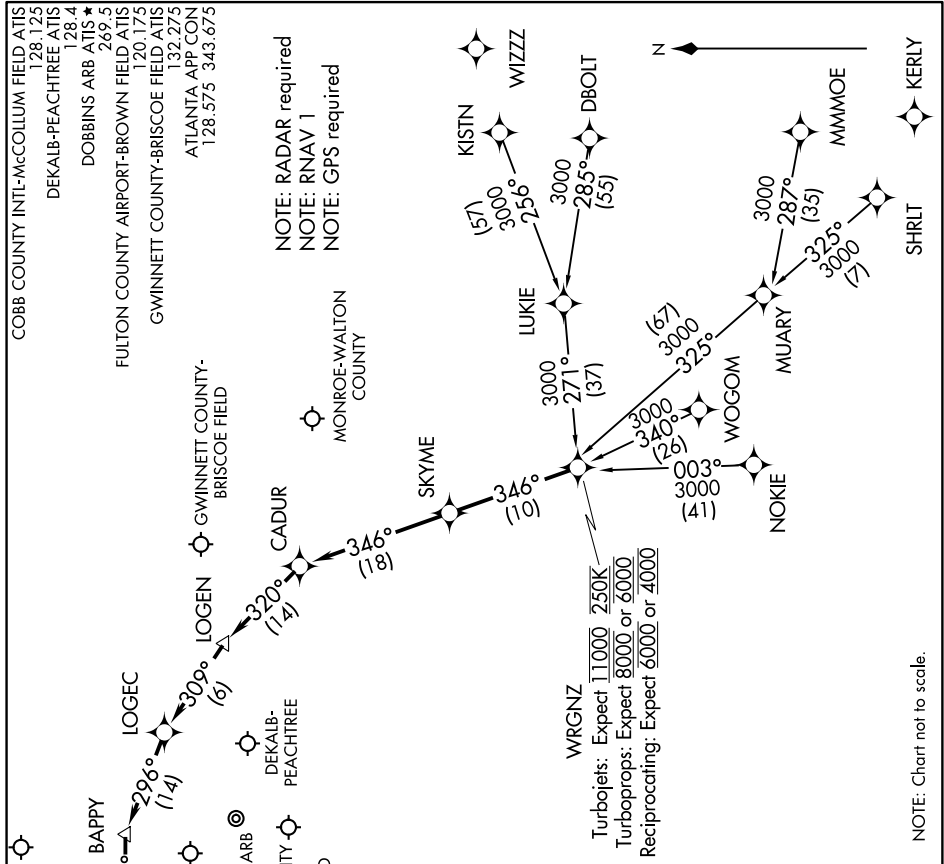


SE-4, 12 OCT 2017 to 09 NOV 2017



NOTE: RADAR required
 NOTE: RNAV 1
 NOTE: GPS required

ARRIVAL ROUTE DESCRIPTION
DBOLT TRANSITION (DBOLT.WRGNZ1)
KISTN TRANSITION (KISTN.WRGNZ1)
LUKIE TRANSITION (LUKIE.WRGNZ1)
MMMOE TRANSITION (MMMOE.WRGNZ1)
NOKIE TRANSITION (NOKIE.WRGNZ1)
SHRLT TRANSITION (SHRLT.WRGNZ1)
WOGOM TRANSITION (WOGOM.WRGNZ1)

From WRGNZ on track 346° to SKYME, then on track 346° to CADUR, then on track 320° to LOGEN, then on track 309° to LOGEC, then on track 296° to BAPPY, then on track 275° to DECLN, then on track 275°. Expect RADAR vectors to final approach course.

LOST COMMUNICATIONS: Cross WRGNZ at or below 11000, cross CADUR at or below 7000, cross DECLN at 4000; after DECLN proceed direct to desired approach IAF for filed airport.

NOTE: Chart not to scale.

SE-4, 12 OCT 2017 to 09 NOV 2017