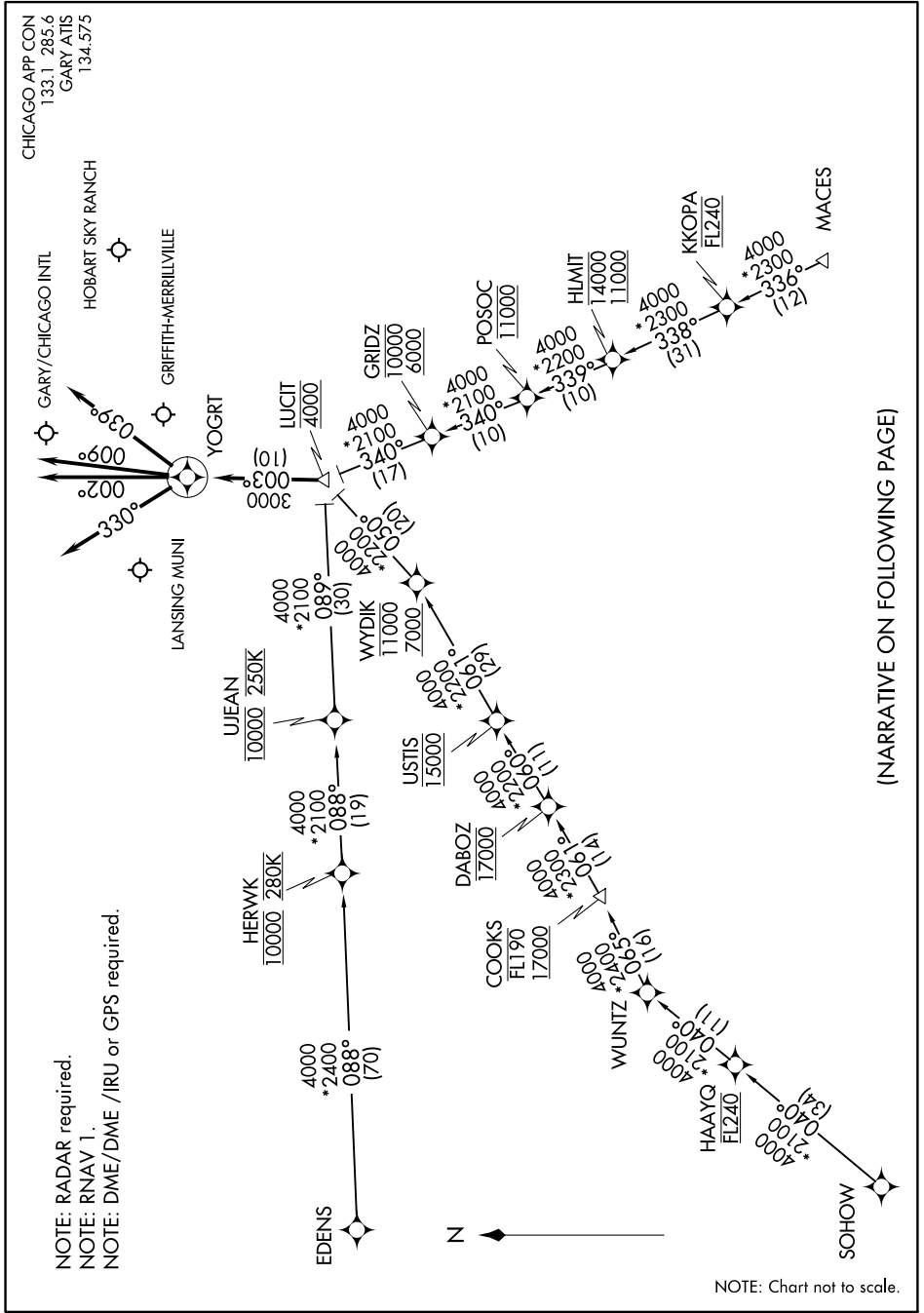


LUCIT ONE ARRIVAL (RNAV)

GARY, INDIANA

EC-2, 12 OCT 2017 to 09 NOV 2017



NOTE: RADAR required.  
NOTE: RNAV 1.  
NOTE: DME/DME /IRU or GPS required.



NOTE: Chart not to scale.

(NARRATIVE ON FOLLOWING PAGE)