

WAAS CH 78113 W23A	APP CRS 227°	Rwy Idg TDZE Apt Elev	6002 1201 1201
--	------------------------	-----------------------------	---

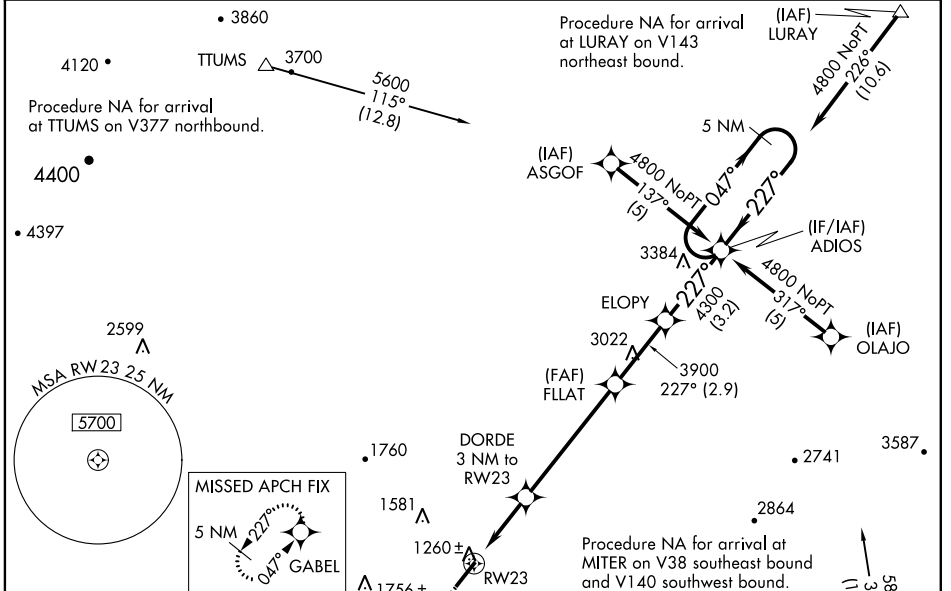
RNAV (GPS) RWY 23

SHENANDOAH VALLEY RGNL (SHD)

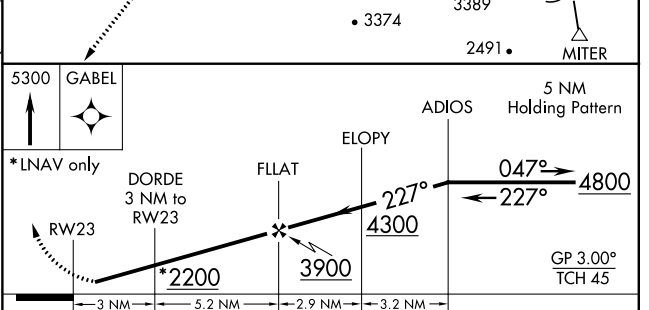
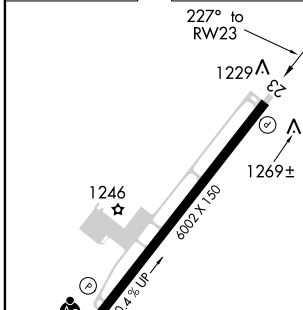
Baro-VNAV NA when using Charlottesville altimeter setting.
 For uncompensated Baro-VNAV systems, LNAV/VNAV NA below -17°C (2°F) or above 47°C (116°F). DME/DME RNP-0.3 NA. Visibility reduction by helicopters NA. When local altimeter setting not received, use Charlottesville altimeter setting and increase all DA 130 feet, all MDA 140 feet. Increase LPV and LNAV/VNAV all Cats visibility ¼ mile, LNAV Cat C visibility ¼ mile and LNAV Cat D and **MISSED APPROACH: Climb to 5300 direct GABEL and hold, continue climb-in-hold to 5300.**

23 -23°C/-9°F Circling Cat D visibility ½ mile.

AWOS-3 124.925	POTOMAC APP CON 132.85 323.125	CLNC DEL 118.35	UNICOM 123.0 (CTAF) 0
--------------------------	--	---------------------------	---------------------------------



ELEV 1201	D	TDZE 1201
-----------	----------	-----------



233	REIL Rwy 23	HIRL Rwy 5-23		
Λ	0	1		
CATEGORY	A	B	C	D
LPV DA		1451-1	250 (300-1)	
LNAV/VNAV DA		1530-1¼	329 (400-1¼)	
LNAV MDA		1520-1	319 (400-1)	
CIRCLING	1600-1 399 (400-1)	1660-1 459 (500-1)	1660-1½ 459 (500-1½)	1820-2 619 (700-2)

NE-3, 12 OCT 2017 to 09 NOV 2017

NE-3, 12 OCT 2017 to 09 NOV 2017