

WAAS CH 81913 W05A	APP CRS 047°	Rwy Idg TDZE Apt Elev	6002 1184 1201
--	------------------------	-----------------------------	---

AL-5369 (FAA)

RNAV (GPS) RWY 5

SHENANDOAH VALLEY RGNL (SHD)

⚠ For inoperative MALSR when using Charlottesville altimeter setting, increase LPV visibility to 1 1/2 mile. For uncompensated Baro-VNAV systems, LNAV/VNAV NA below -17°C (2°F) or above 46°C (114°F). DME/DME RNP-0.3 NA. Baro-VNAV and VDP NA when using Charlottesville altimeter setting. When local altimeter setting not received, use Charlottesville altimeter setting and increase all DA 130 feet, all MDA 140 feet. Increase LPV all Cats visibility 1/2 mile, LNAV/VNAV all Cats 1/2 mile, LNAV Cat C/D 1/4 mile and Circling Cat D 1/2 mile.

MALSR



MISSED APPROACH: Climb to 5200 direct HAPED and left turn via track 304° to JATIR and left turn via track 199° to GABEL and hold.

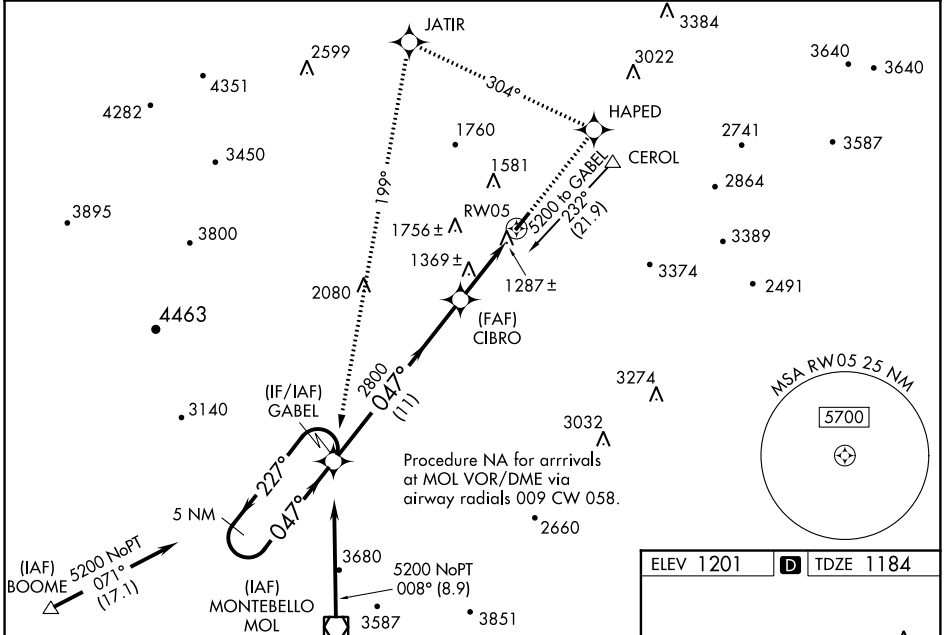
☁ 23°C/-9°F

AWOS-3
124.925

POTOMAC APP CON
132.85 323.125

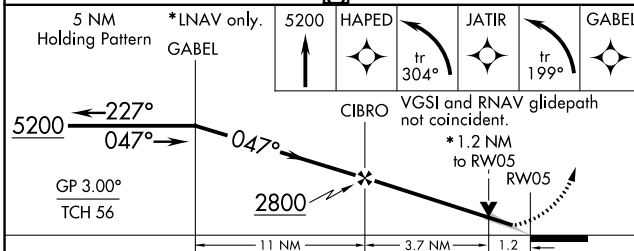
CLNC DEL
118.35

UNICOM
123.0 (CTAF)



NE-3, 12 OCT 2017 to 09 NOV 2017

NE-3, 12 OCT 2017 to 09 NOV 2017



CATEGORY	A	B	C	D
LPV DA	1384-1/2 200 (200-1/2)			
LNAV/VNAV DA	1563-3/4 379 (400-3/4)			
LNAV MDA	1620-1/2 436 (500-1/2)	1620-3/4 436 (500-3/4)		1620-1 436 (500-1)
CIRCLING	1620-1 419 (500-1)	1660-1 459 (500-1)	1660-1 1/2 459 (500-1 1/2)	1820-2 619 (700-2)

