

| | |
|------------------------|------------------------|
| APP CRS 263° | Rwy Idg 3780 |
| | TDZE 632 |
| | Apt Elev 634 |

RNAV (GPS) RWY 26

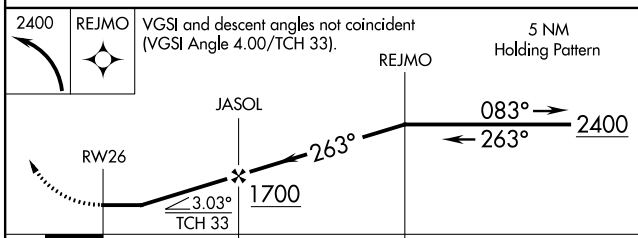
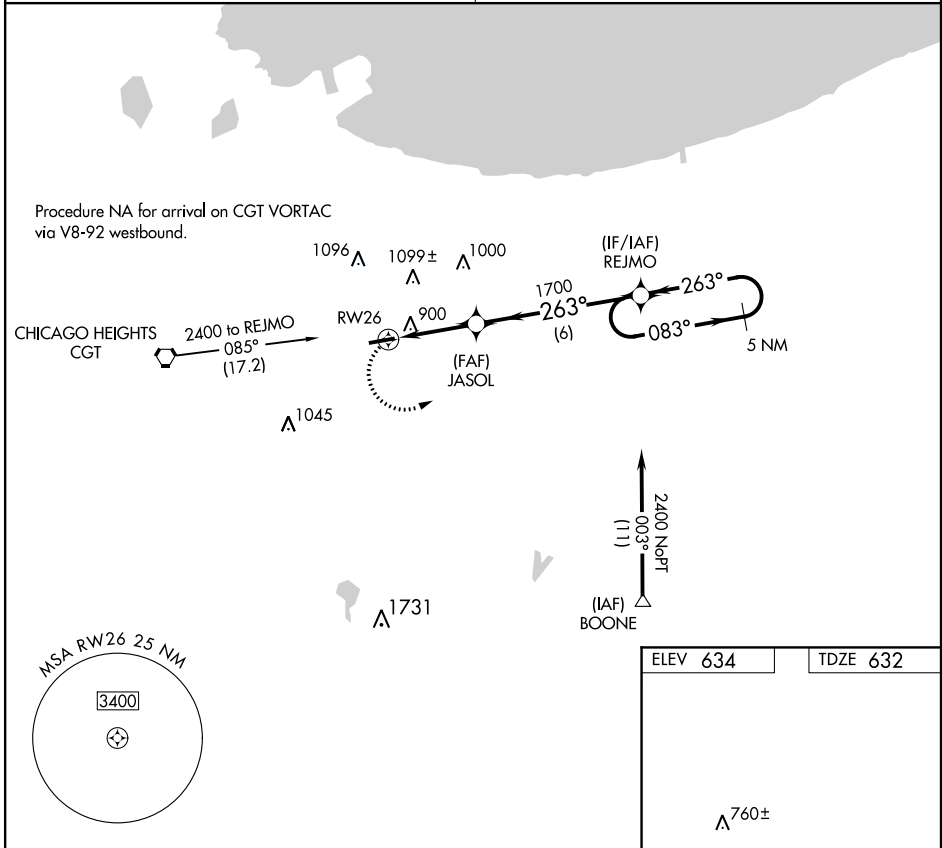
GRIFFITH-MERRILLVILLE (Ø5C)

▽ DME/DME RNP -0.3 NA. Obtain local altimeter setting on CTAF; when not received use Chicago Midway Inl altimeter setting and increase all MDAs 60 feet. Visibility reduction by helicopters NA.

▲ NA

MISSED APPROACH: Climbing left turn to 2400 direct REJMO and hold.

| | |
|---------------------------------------|---------------------------------|
| CHICAGO APP CON 133.1 285.6 | UNICOM 123.0 (CTAF) 0 |
|---------------------------------------|---------------------------------|



| | |
|--|----------|
| ELEV 634 | TDZE 632 |
| | |
| REIL Rwy 8 and 26 0 MIRL Rwy 8-26 0 | |

| CATEGORY | A | B | C | D |
|----------|--------|-------------|---|----|
| LNAV MDA | 1160-1 | 528 (600-1) | | NA |
| CIRCLING | 1200-1 | 566 (600-1) | | NA |

EC-2, 12 OCT 2017 to 09 NOV 2017

EC-2, 12 OCT 2017 to 09 NOV 2017