

APP CRS 083°	Rwy Idg 4900
	TDZE 634
	Apt Elev 634

RNAV (GPS) RWY 8

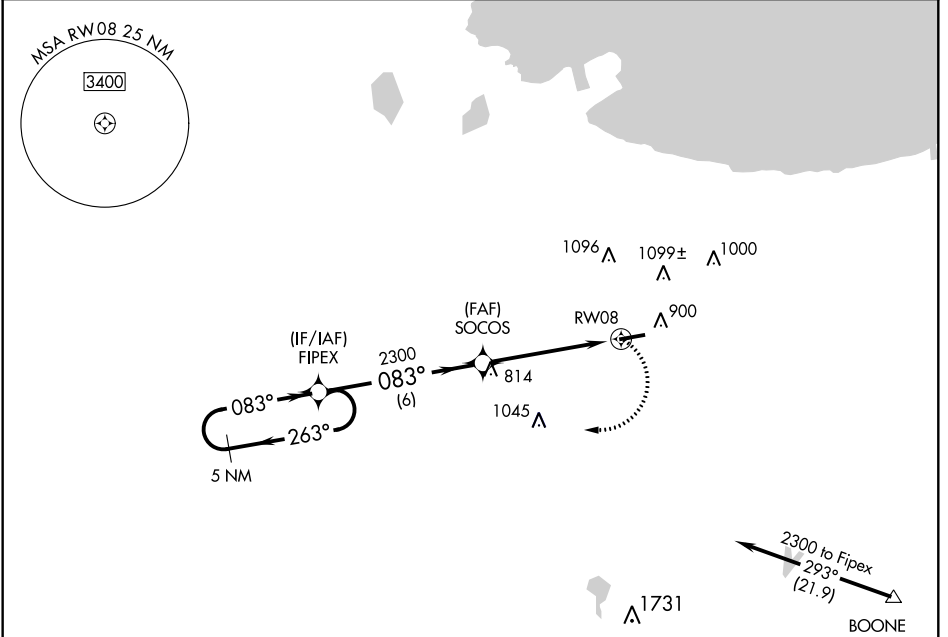
GRIFFITH-MERRILLVILLE (Ø5C)

⚠ DME/DME RNP -0.3 NA. Obtain local altimeter setting on CTAF; when not received use Chicago Midway Intl altimeter setting and increase all MDAs 60 feet. Visibility reduction by helicopters NA.

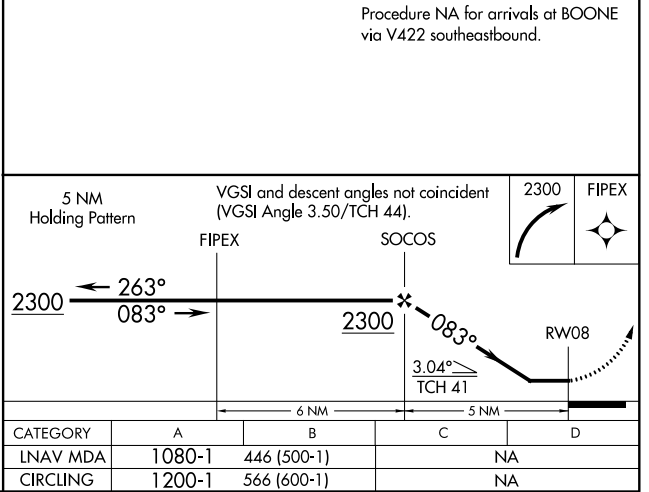
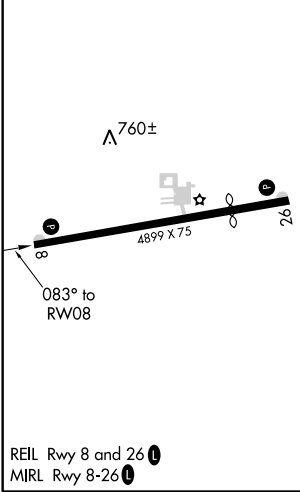
⚠ NA

MISSED APPROACH: Climbing right turn to 2300 direct FIPEX and hold.

CHICAGO APP CON 133.1 285.6	UNICOM 123.0 (CTAF) 0
---------------------------------------	---------------------------------



ELEV 634	TDZE 634
----------	----------



EC-2, 12 OCT 2017 to 09 NOV 2017

EC-2, 12 OCT 2017 to 09 NOV 2017