

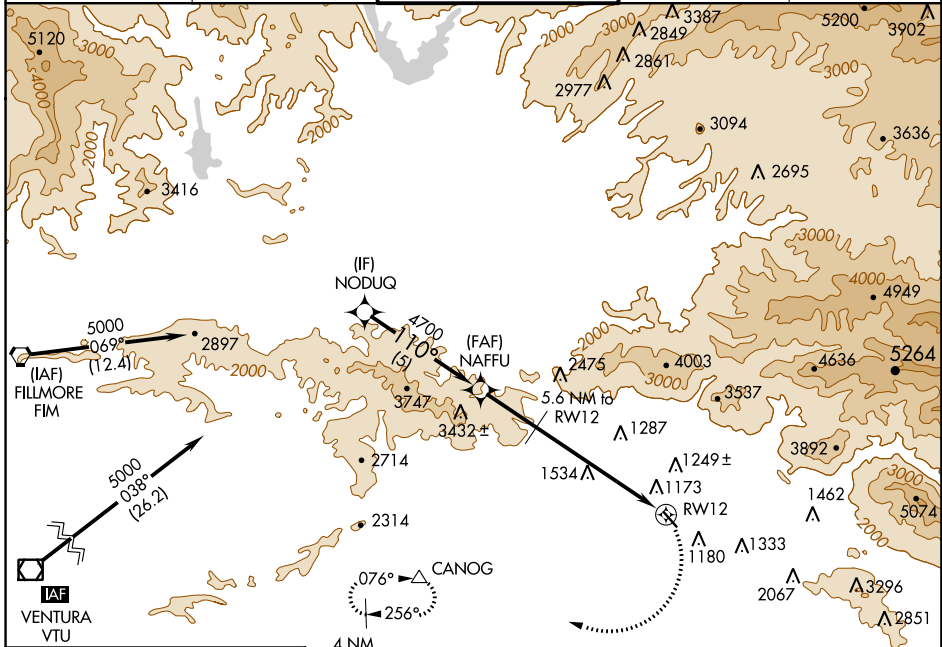
APP CRS <b>110°</b>	Rwy Idg TDZE Apt Elev	<b>N/A</b> <b>N/A</b> <b>1003</b>
------------------------	-----------------------------	---

# RNAV (GPS)-C

WHITEMAN (WHP)

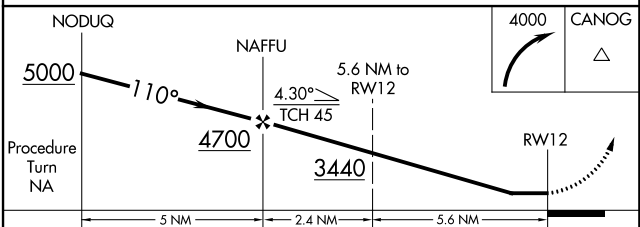
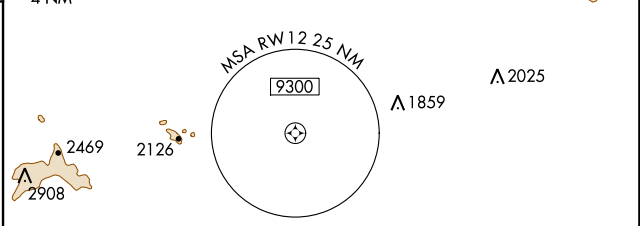
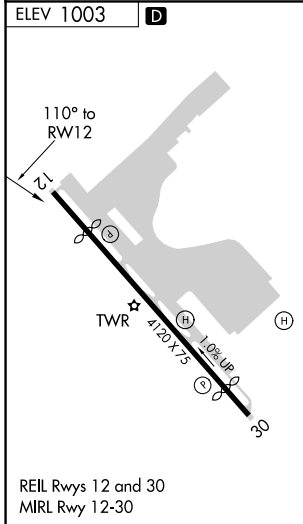
When control tower closed, use Burbank altimeter setting.  
**IAF** ARM APPROACH MODE PRIOR TO IAF.  
 GPS or RNP-0.3 required. DME/DME RNP-0.3 NA.  
**MISSED APPROACH:** Climbing right turn to 4000 direct CANOG and hold.

ATIS <b>132.1</b>	SOCAL APP CON <b>134.2 338.2</b>	WHITEMAN TOWER * <b>135.0 (CTAF)</b>	GND CON <b>125.0</b>	UNICOM <b>122.95</b>
----------------------	-------------------------------------	---	-------------------------	-------------------------



SW-3, 12 OCT 2017 to 09 NOV 2017

SW-3, 12 OCT 2017 to 09 NOV 2017



CATEGORY	A	B	C	D
CIRCLING	1900-1¼	897 (900-1¼)	1900-2¾	897 (900-2¾)