

APP CRS	Rwy Idg	2443
322°	TDZE	3
	Apt Elev	3

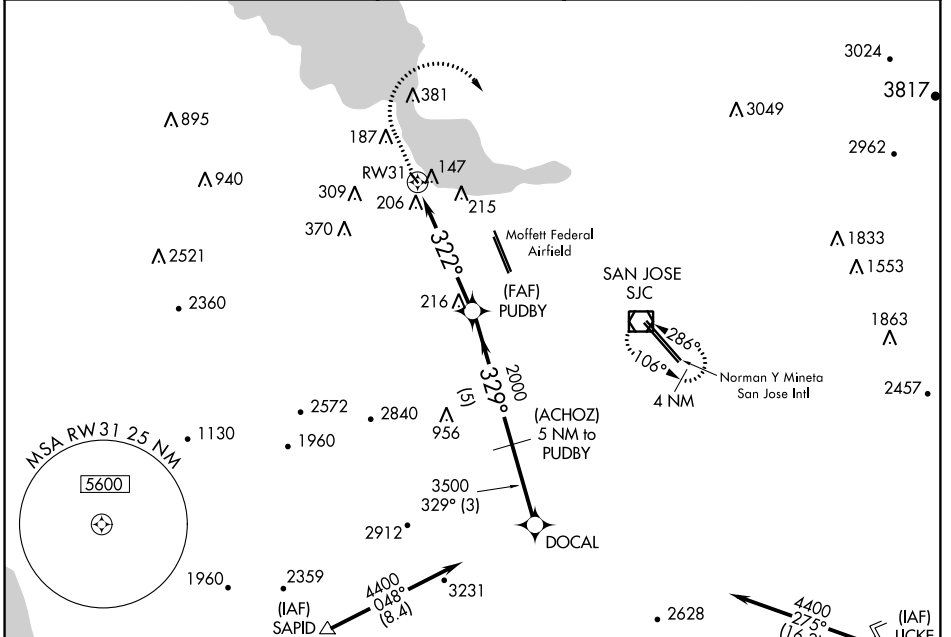
GPS RWY 31

PALO ALTO (PAO)

▼ When control tower closed, use Norman Y Mineta San Jose Intl altimeter setting.
▲ NA Circling not authorized southwest of Rwy 13-31.

MISSED APPROACH: Climb to 1000 then climbing right turn to 3000 direct SJC VOR/DME and hold.

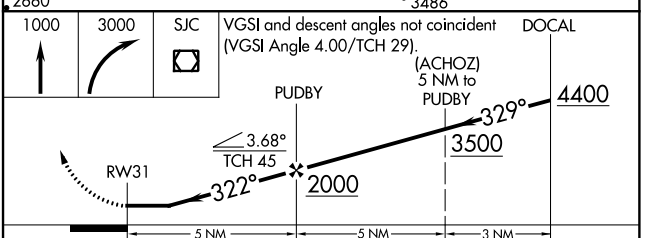
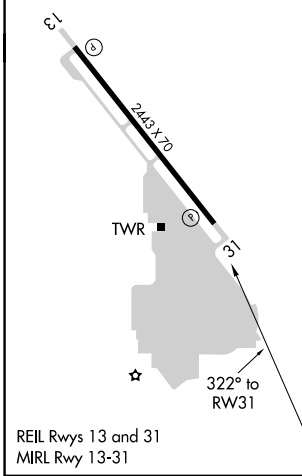
ATIS 135.275	NORCAL APP CON 121.3 270.35	PALO ALTO TOWER* 118.6 (CTAF)	GND CON 125.0	UNICOM 122.95
------------------------	---------------------------------------	--	-------------------------	-------------------------



SW-2, 12 OCT 2017 to 09 NOV 2017

SW-2, 12 OCT 2017 to 09 NOV 2017

ELEV	3	TDZE	3
------	---	------	---



CATEGORY	A	B	C	D
S-31	460-1	457 (500-1)		NA
CIRCLING	460-1 457 (500-1)	500-1 497 (500-1)		NA
NORMAN Y MINETA SAN JOSE INTL ALTIMETER SETTING MINIMUMS				
S-31	500-1	497 (500-1)		NA
CIRCLING	500-1 497 (500-1)	520-1 517 (600-1)		NA