

# HI-TACAN RWY 13

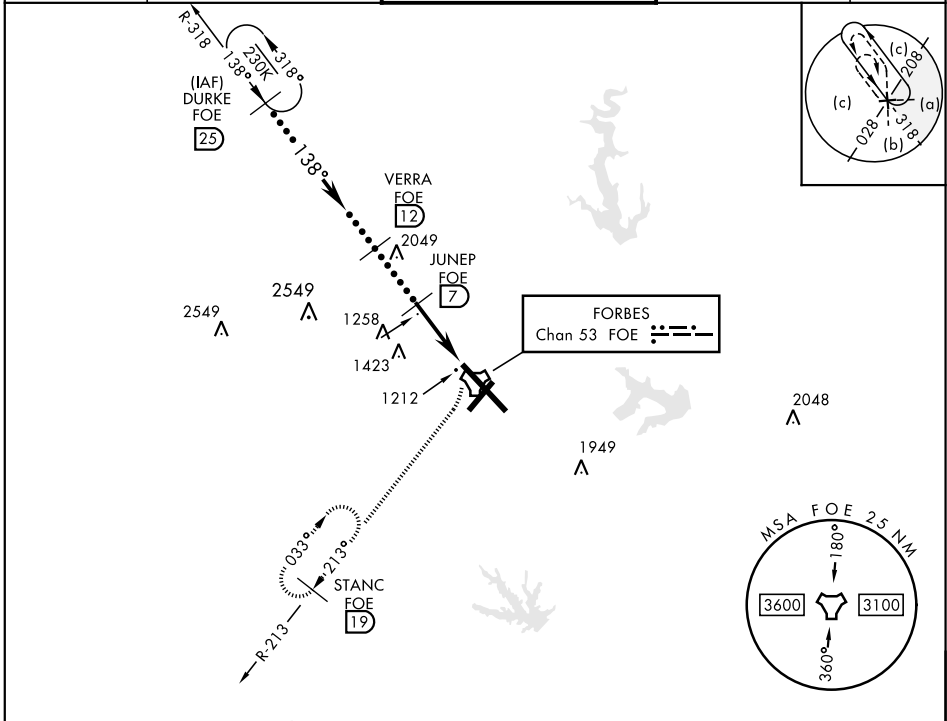
TACAN Chan 53	FOE 138°	APCH CRS 138°	Rwy Idg 12,803	TDZE 1065	Arprt Elev 1078
------------------	-------------	------------------	-------------------	--------------	--------------------

JAL-424 [USAF]

TOPEKA RGNL (KFOE)

<p>▼ * Inoperative table does not apply.</p>	SALS A2	MISSED APPROACH: Climbing right turn to 3000 via FOE TACAN R-213 to STANC/19 DME and hold.
--	------------	--

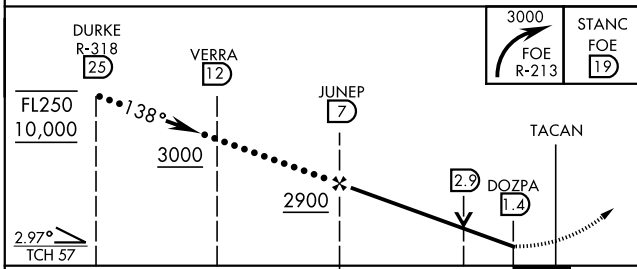
ATIS 128.25	KANSAS CITY CENTER 123.8 343.7	FORBES TOWER ★ 120.8 (CTAF) 340.2	GND CON 121.7 275.8	ASOS
----------------	-----------------------------------	--------------------------------------	------------------------	------



NC-2, 09 NOV 2017 to 07 DEC 2017

NC-2, 09 NOV 2017 to 07 DEC 2017

EMERG SAFE ALT 100 NM 3600



CATEGORY	C	D	E
S-13 *	1600-1¼ 535 (600-1¼)	1600-1½ 535	(600-1½)
CIRCLING	1600-1½ 522 (600-1½)	1700-2 622 (700-2)	1720-2¼ 642 (700-2¼)

ELEV 1078	TDZE 1065
-----------	-----------

Runway 13 diagram showing:

- Runway 13:** 12,803 ft long.
- Taxiway 12:** 700 ft x 150 ft.
- Taxiway 21:** 335 ft UP.
- Navigation Aids:** A2, V, A5, 31.
- Other:** TWIR 1208, 1200 ft.

MIRL Rwy 3-21  
REIL Rwy 3, 13, and 21  
HIRL Rwy 13-31

# HI-TACAN RWY 13