

WAAS CH 65934 W03A	APP CRS 035°	Rwy Idg TDZE 1078 Apt Elev 1078	7001
--	------------------------	---	-------------

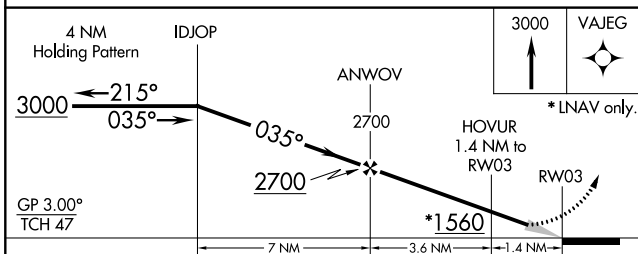
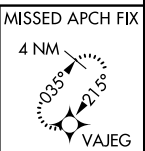
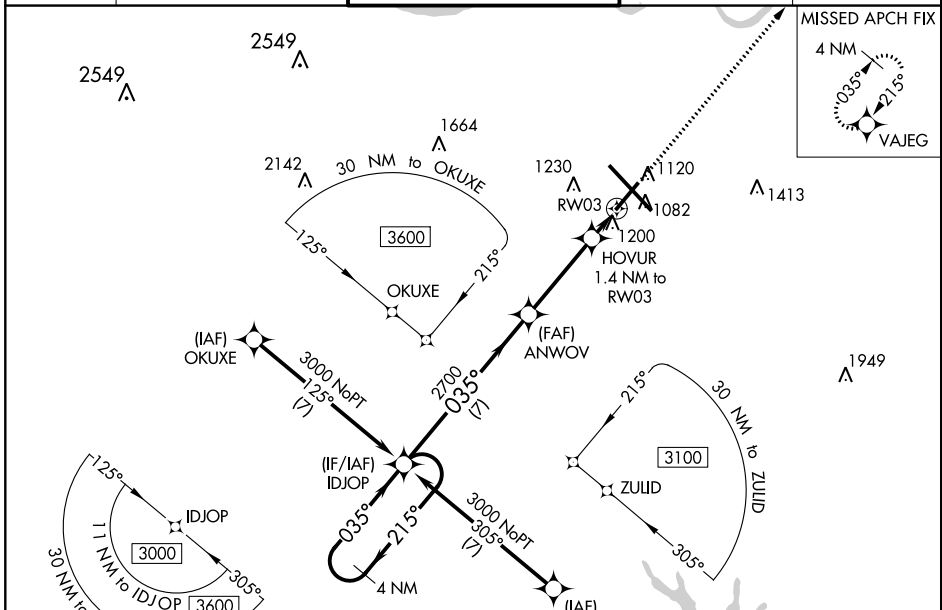
RNAV (GPS) RWY 3

TOPEKA RGNL (F/OE)

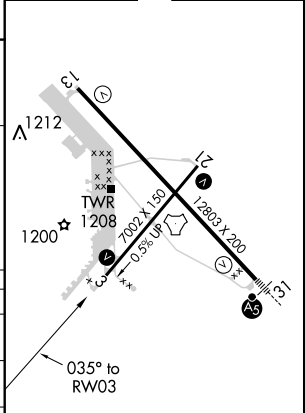
⚠ Baro-VNAV NA when using Philip Billard Muni altimeter setting. For uncompensated Baro-VNAV systems, LNAV/VNAV NA below -19°C (-2°F) or above 54°C (130°F). When local altimeter setting not received, use Philip Billard Muni altimeter setting and increase all DA 45 feet and all MDA 60 feet, increase LPV all Cats and LNAV/VNAV all Cats visibility ¼ mile, LNAV Cat C/D and Circling Cat D visibilities ¼ mile. DME/DME RNP-0.3 NA.

MISSED APPROACH:
Climb to 3000 direct VAJEG and hold.

ATIS 128.25	KANSAS CITY CENTER 123.8 343.7	FORBES TOWER* 120.8 (CTAF) 340.2	GND CON 121.7 275.8	UNICOM 122.95
-----------------------	--	--	-------------------------------	-------------------------



ELEV 1078	D TDZE 1078
-----------	--------------------



CATEGORY	A	B	C	D
LPV DA		1328-¾	250 (300-¾)	
LNAV/VNAV DA		1361-7/8	283 (300-7/8)	
LNAV MDA	1460-1	382 (400-1)	1460-1½	382 (400-1½)
C CIRCLING	1520-1 442 (500-1)	1580-1 502 (600-1)	1580-1½ 502 (600-1½)	1700-2 622 (700-2)

REIL Rwy 3, 13 and 21
MIRL Rwy 3-21 **⓪**
HIRL Rwy 13-31 **⓪**

NC-2, 09 NOV 2017 to 07 DEC 2017

NC-2, 09 NOV 2017 to 07 DEC 2017