


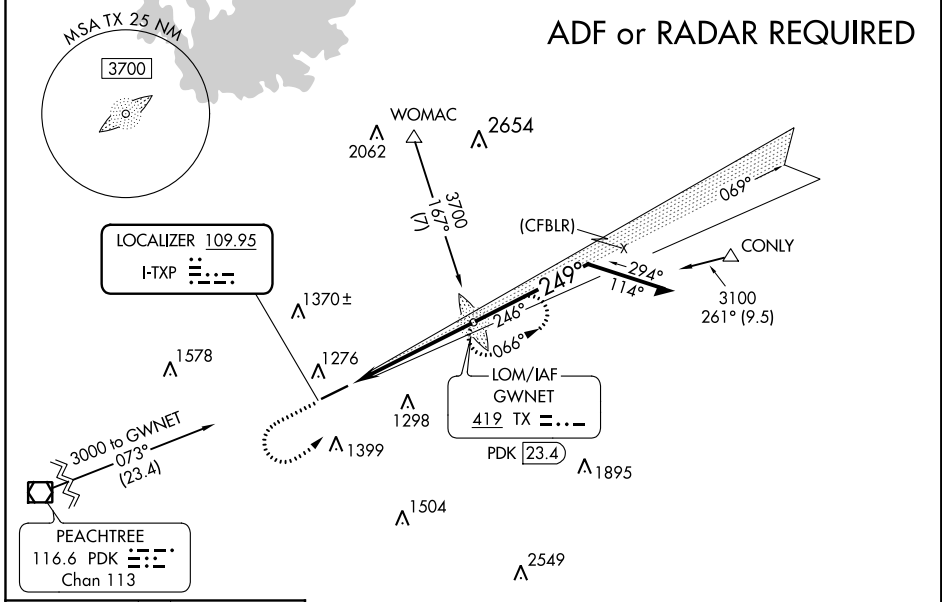
LOC I-TXP <b>109.95</b>	APP CRS <b>249°</b>	Rwy Idg TDZE Apt Elev	<b>6000</b> <b>1038</b> <b>1062</b>
----------------------------	------------------------	-----------------------------	-------------------------------------------

**ILS or LOC RWY 25**  
GWINNETT COUNTY-BRISCOE FIELD (LZU)


**NA** When local alimeter setting not received, use Winder alimeter setting and increase all DA 51 feet, and all MDA 60 feet, increase S-LOC 25 Cat C/D and Circling Cat C/D visibility 1/2 SM. ADF required. For inop MALSR, when using Winder alimeter setting increase S-ILS 25 all Cats visibility to 3/8 SM.

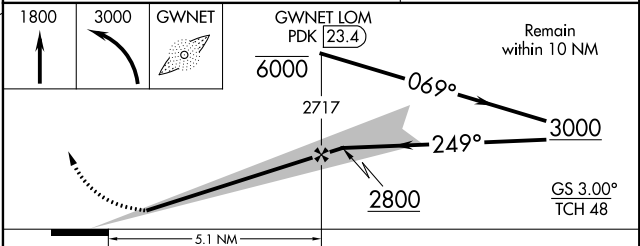
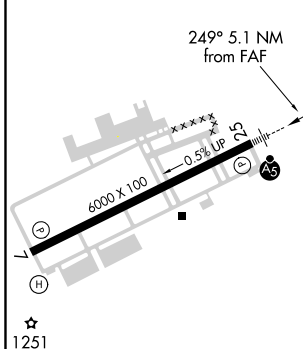
**MALSR**  
  
**MISSED APPROACH:** Climb to 1800 then climbing left turn to 3000 direct GWINNET LOM and hold.

ATIS <b>132.275</b>	ATLANTA APP CON <b>126.975 239.275</b>	<b>GWINNETT TOWER *</b> <b>124.1 (CTAF) 1</b>	GND CON <b>121.8</b>	CLNC DEL <b>121.8</b>	ATLANTA CLNC DEL <b>134.0</b> (When tower closed)	UNICOM <b>123.05</b>
------------------------	-------------------------------------------	--------------------------------------------------	-------------------------	--------------------------	---------------------------------------------------------	-------------------------



ELEV 1062	TDZE 1038
-----------	-----------

**ALTERNATIVE MISSED APCH FIX**  
GWINNET  
419 TX PDK 23.4  




CATEGORY	A	B	C	D
S-ILS 25	1238-1/2		200 (200-1/2)	
S-LOC 25	1540-1/2 502 (500-1/2)		1540-1 502 (500-1)	
CIRCLING	1640-1 578 (600-1)		1640-1 1/2 578 (600-1 1/2) 1700-2 638 (700-2)	

SE-4, 09 NOV 2017 to 07 DEC 2017

SE-4, 09 NOV 2017 to 07 DEC 2017