

WAAS CH <b>99719</b> W16A	APP CRS <b>164°</b>	Rwy Idg TDZE Apt Elev	<b>6000</b> <b>99</b> <b>100</b>
---------------------------------	------------------------	-----------------------------	--

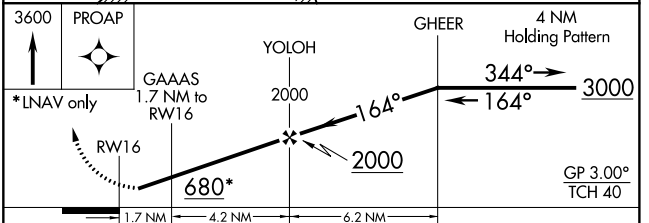
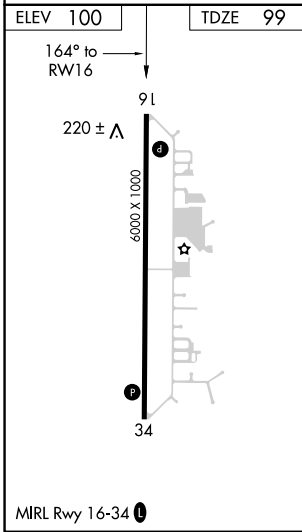
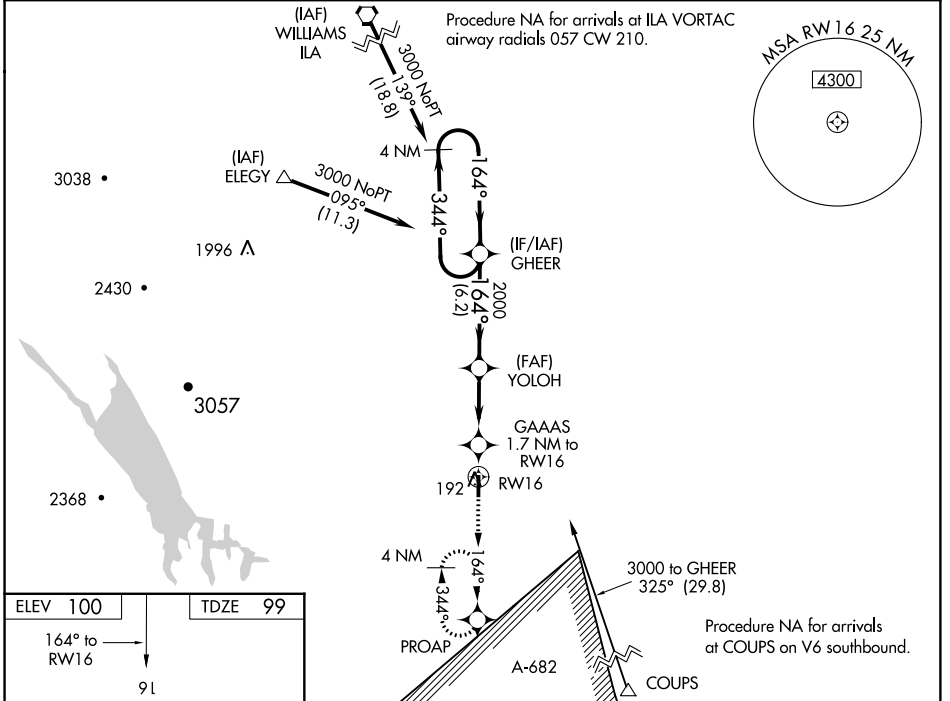
# RNAV (GPS) RWY 16

YOLO COUNTY (DWA)

**NA** DME/DME RNP-0.3 NA. When local altimeter setting not received, use Travis AFB altimeter setting and increase all DA 50 feet and all MDA 60 feet, and increase LNAV/VNAV all Cats and NAV Cat C and D visibility ¼ mile. For uncompensated Baro-VNAV systems, LNAV/VNAV NA below -15°C (5°F) or above 43°C (109°F). Baro-VNAV NA when using Travis AFB altimeter setting.

MISSED APPROACH: Climb to 3600 direct PROAP and hold, continue climb-in-hold to 3600.

AWOS-3 <b>125.775</b>	TRAVIS APP CON <b>126.6 281.45</b>	UNICOM <b>123.0 (CTAF) 0</b>
--------------------------	---------------------------------------	---------------------------------



CATEGORY	A	B	C	D
LPV DA		360-1	261 (300-1)	
LNAV/VNAV DA		402-1	303 (400-1)	
LNAV MDA	480-1	381 (400-1)	480-1½	381 (400-1½)
CIRCLING	560-1	460 (500-1)	560-1½	660-2 460 (500-1½) 560 (600-2)

SW-2, 07 DEC 2017 to 04 JAN 2018

SW-2, 07 DEC 2017 to 04 JAN 2018