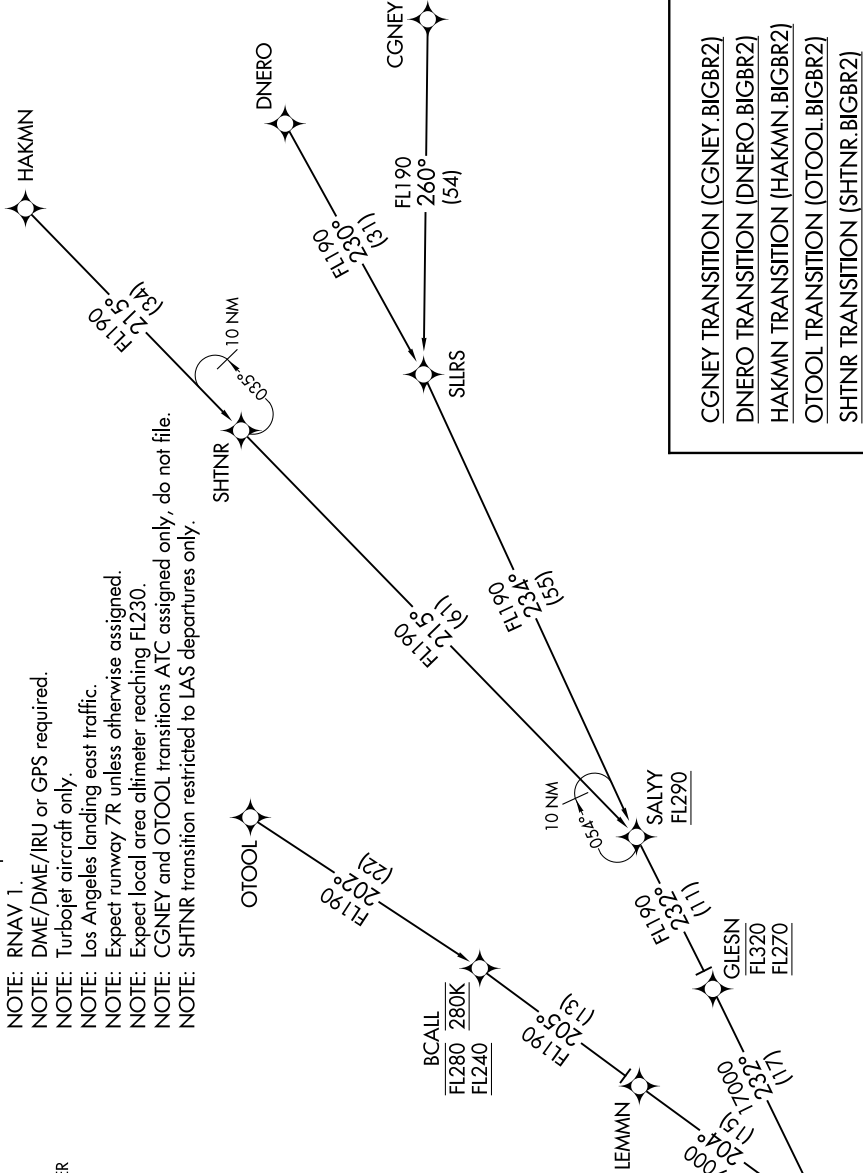


BIGBR TWO ARRIVAL (RNAV) Transition Routes

SW-3, 04 JAN 2018 to 01 FEB 2018

SOCAL APP CON
124.05 353.775
D-ATIS ARR
133.8
LOS ANGELES TOWER
(N) 133.9 239.3
(S) 120.95 379.1

- NOTE: RADAR required.
- NOTE: RNAV 1.
- NOTE: DME/DME/IRU or GPS required.
- NOTE: Turboprop aircraft only.
- NOTE: Los Angeles landing east traffic.
- NOTE: Expect runway 7R unless otherwise assigned.
- NOTE: Expect local area altimeter reaching FL230.
- NOTE: CGNEY and OTOOL transitions ATC assigned only, do not file.
- NOTE: SHTNR transition restricted to LAS departures only.



- CGNEY TRANSITION (CGNEY.BIGBR2)
- DNERO TRANSITION (DNERO.BIGBR2)
- HAKMN TRANSITION (HAKMN.BIGBR2)
- OTOOL TRANSITION (OTOOL.BIGBR2)
- SHTNR TRANSITION (SHTNR.BIGBR2)

(CONTINUED ON FOLLOWING PAGE) NOTE: Chart not to scale.

SW-3, 04 JAN 2018 to 01 FEB 2018

BIGBR TWO ARRIVAL (RNAV) Transition Routes

See following page
for Arrival Routes.