

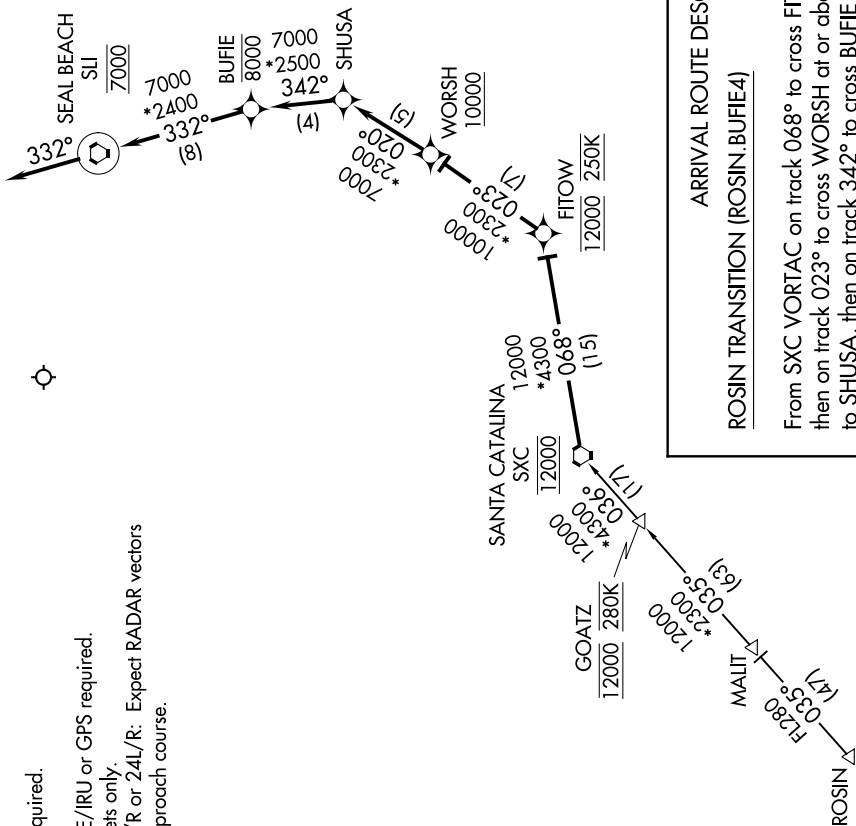
SW-3, 04 JAN 2018 to 01 FEB 2018

SOCAL APP CON
127.4 387.02
LOS ANGELES TOWER
(N) 133.9 239.3
(S) 120.95 379.1



NOTE: Chart not to scale.

- NOTE: RADAR required.
- NOTE: RNAV 1.
- NOTE: DME/DME/IRU or GPS required.
- NOTE: For turboprops only.
- NOTE: Rwy 25L/R or 24L/R: Expect RADAR vectors to final approach course.



ARRIVAL ROUTE DESCRIPTION

ROSIN TRANSITION (ROSIN.BUFIE4)

From SXC VORTAC on track 068° to cross FITOW at 12000 and at 250K, then on track 023° to cross WORSH at or above 10000, then on track 020° to SHUSA, then on track 342° to cross BUFIE at or below 8000, then on track 332° to cross SLI VORTAC at 7000, then on track 332°. Expect RADAR vectors to final approach course.



SW-3, 04 JAN 2018 to 01 FEB 2018