

(GABRE2.GABRE) 17229

GABRE TWO DEPARTURE

AL-237 (FAA)

LOS ANGELES INTL (LAX)
LOS ANGELES, CALIFORNIA

D-ATIS DEP
135.65
CLNC DEL
120.35 327.0
CPDLC
GND CON
(N) 121.65 327.0
(S) 121.75 327.0
(W) 121.4 327.0
LOS ANGELES TOWER
(N) 133.9 239.3
(S) 120.95 379.1
SOCAL DEP CON
124.3 363.2 (045°-224°)
125.2 263.025 (225°-044°)

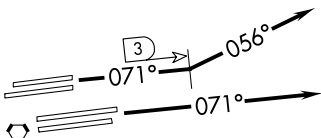
**TOP ALTITUDE:
ASSIGNED BY ATC**

DAGGETT
113.2 DAG
Chan 79
N34°57.75'-W116°34.69'
L-7, H-4

GABRE
N34°20.39'
W118°03.29'
11000

FOGEX
N34°28.12'
W117°33.75'

VAN NUYS
113.1 VNY
Chan 78



LOS ANGELES
113.6 LAX
Chan 83

SEAL BEACH
115.7 SLI
Chan 104

NOTE: RADAR and DME required.
NOTE: Maintain 250K until advised by ATC.

TAKEOFF MINIMUMS

Rwys 24L/R, 25L/R: NA-Operational.
Rwys 6L/R, 7L/R: Minimum climb of 397' per NM to 12000.

NOTE: Chart not to scale.



DEPARTURE ROUTE DESCRIPTION

TAKEOFF RUNWAYS 6L/R: Climb on heading 071° until LAX VORTAC 3 DME, then turn left heading 056° for vectors to SLI R-345. Thence. . .

TAKEOFF RUNWAYS 7L/R: Climb on heading 071° for vector to SLI R-345. Thence. . .
. . . on SLI R-345 to GABRE. Then on (transition) or (assigned route), expect filed altitude 5 minutes after departure.

DAGGETT TRANSITION (GABRE2.DAG): From over GABRE on VNY R-057 to FOGEX then on DAG R-224 to DAG VORTAC.

GABRE TWO DEPARTURE

(GABRE2.GABRE) 17AUG17

LOS ANGELES, CALIFORNIA
LOS ANGELES INTL (LAX)

SW-3, 04 JAN 2018 to 01 FEB 2018

SW-3, 04 JAN 2018 to 01 FEB 2018