

**(HUULL.HUULL1) 17117**  
**HUULL ONE ARRIVAL (RNAV)**

AL-237 (FAA)

**LOS ANGELES INTL (LAX)**  
 LOS ANGELES, CALIFORNIA

SW-3, 04 JAN 2018 to 01 FEB 2018

**ARRIVAL ROUTE DESCRIPTION**

TOKIO TRANSITION (TOKIO.HUULL1)

From HUULL on track 079° to cross GNZZO between 14000 and 16000, then on track 079° to cross RYDRR at 11000, then on track 103° to cross KEVVI at or above 10000 and at 250K, then on track 103° to cross BAYST at or above 9000 and at 240K, then on track 084° to cross JUUSE between 8000 and 9000, then on track 084° to cross CLIFY between 7000 and 8000 and at 210K, then on track 066° to cross DAHJR at 6000 and at 210K, then on track 071° to GADDO, then on track 071°. Expect RADAR vectors to final approach course.

LOST COMMUNICATIONS

In the event of lost communications: RNP LAX arrivals proceed on the RNAV (RNP) Z RWY 24R approach at DAHJR.

NOTE: RADAR required.

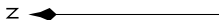
NOTE: RNAV 1.

NOTE: DME/DME/IRU or GPS required.

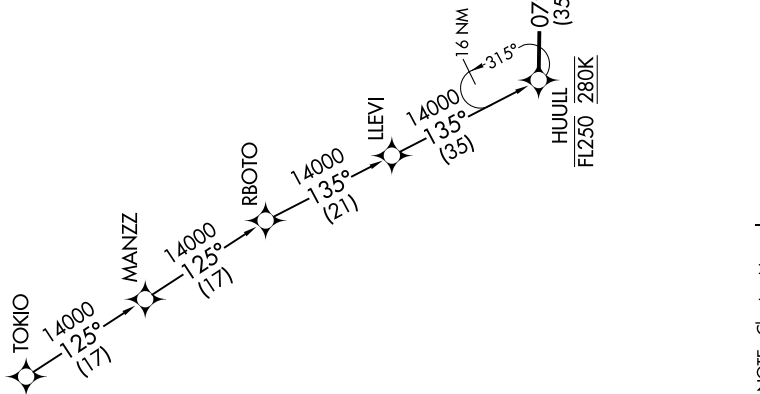
NOTE: Turbojet aircraft only.

NOTE: Procedure is only for use when Los Angeles landing west.

NOTE: Expect Runway 24R unless otherwise assigned by ATC.



SOCAL APP CON  
 124.5 235.975  
 D-ATIS ARR  
 133.8  
 LOS ANGELES TOWER  
 (N) 133.9 239.3  
 (S) 120.95 379.1



NOTE: Chart not to scale.

**HUULL ONE ARRIVAL (RNAV)**  
**(HUULL.HUULL1) 27APR17**

**LOS ANGELES, CALIFORNIA**  
**LOS ANGELES INTL (LAX)**

SW-3, 04 JAN 2018 to 01 FEB 2018