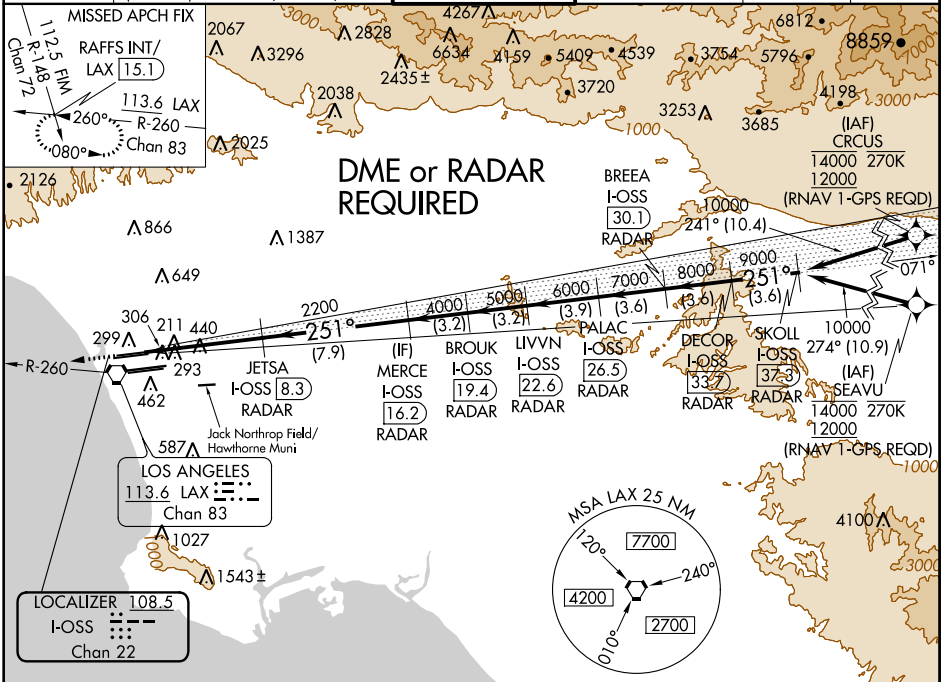


LOC/DME I-OSS 108.5 Chan 22	APP CRS 251°	Rwy Idg TDZE Apt Elev	8925 122 128
---	------------------------	-----------------------------	---

ILS RWY 24R (CAT II & III)

LOS ANGELES INTL (LAX)

<p>▼ DME or RADAR required. Simultaneous approach authorized. Simultaneous approach authorized with HHR.</p>		<p>ALSF-2</p>	<p>MISSED APPROACH: Climb to 2000 on heading 251° and LAX VORTAC R-260 to RAFFS INT/LAX 15.1 DME and hold.</p>		
<p>D-ATIS ARR 133.8 DEP 135.65</p>	<p>SOCAL APP CON 124.3 363.2 124.9 269.0 (APCH FM WEST) (090°-224°) 124.5 235.975 (225°-044°) 128.5 360.7 (045°-089°)</p>	<p>LOS ANGELES TOWER N 133.9 239.3 S 120.95 379.1</p>	<p>GN DME CON N 121.65 327.0 S 121.75 327.0 W 121.4 327.0</p>	<p>CLNC DEL 120.35 327.0</p>	<p>CPDLC</p>



SW-3, 04 JAN 2018 to 01 FEB 2018

SW-3, 04 JAN 2018 to 01 FEB 2018

ELEV 128	D	TDZE 122	2000	LAX R-260	RAFFS INT	<p>VGSI and ILS glidepath not coincident (VGSI Angle 3.00/TCH 73).</p>					
			hdg 251°	JETSA I-OSS (8.3) RADAR	MERCE I-OSS (19.4) RADAR	BROUK I-OSS (22.6) RADAR	LIVVN I-OSS (26.5) RADAR	PALAC I-OSS (30.1) RADAR	BREA I-OSS (33.7) RADAR	DECOR I-OSS (37.3) RADAR	SKOLL I-OSS (37.3) RADAR
			2200	4000	5000	6000	7000	8000	9000	10000	GS 3.00° TCH 55
			1025'	6.4 NM	7.9 NM	3.2 NM	3.2 NM	3.9 NM	3.6 NM	3.6 NM	3.6 NM
			CATEGORY	A	B	C	D				
			S-ILS 24R	CAT II RA 118/12 100 DA 222							
			S-ILS 24R	CAT III RVR 06							
<p>CATEGORY II & III ILS - SPECIAL AIRCREW & AIRCRAFT CERTIFICATION REQUIRED</p>											

LOS ANGELES, CALIFORNIA
Amdt 26 12OCT17

33°57'N-118°24'W

LOS ANGELES INTL (LAX) ILS RWY 24R (CAT II & III)