

LOC/DME I-MKZ <b>109.9</b> Chan 36	APP CRS <b>071°</b>	Rwy Idg 7R <b>11095</b> <b>11259</b> 7L TDZE <b>128</b> <b>128</b> Apt Elev <b>128</b> <b>128</b>
--	------------------------	---

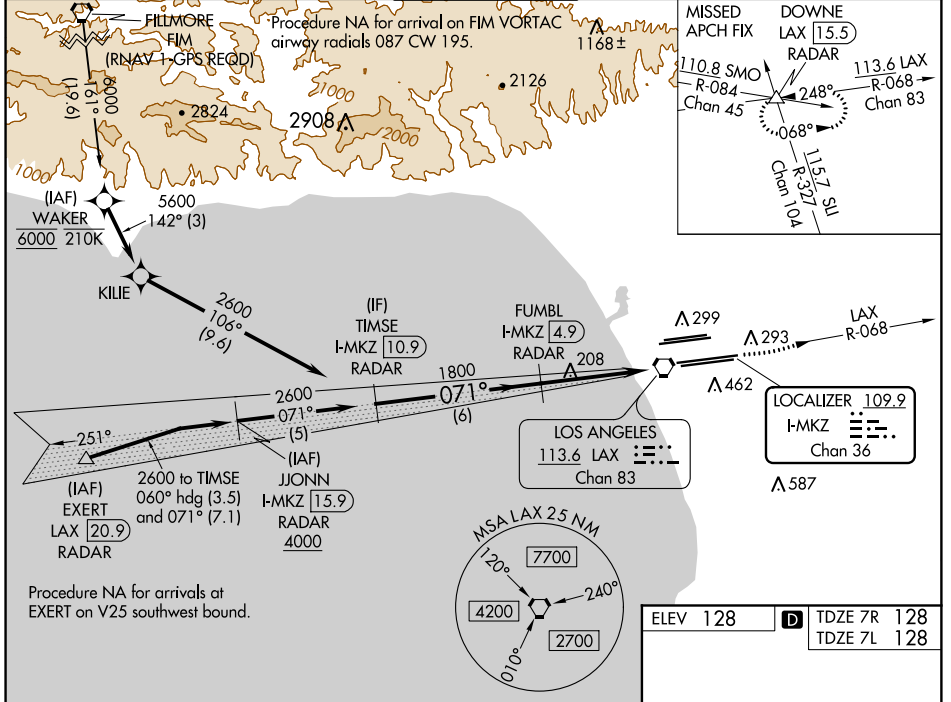
# ILS or LOC RWY 7R

LOS ANGELES INTL (LAX)

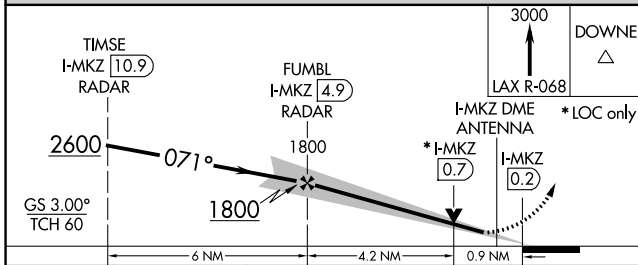
Simultaneous approach authorized. DME or RADAR required. Inop table does not apply to Sidestep Rwy 7L Cats A and B. #RVR 1800 authorized with use of FD or AP or HUD to DA.

MALSR Rwy 7R	MALSR Rwy 7L	MISSED APPROACH: Climb to 3000 on LAX VORTAC R-068 to DOWNNE INT/ LAX 15.5 DME/RADAR and hold.
--------------	--------------	--

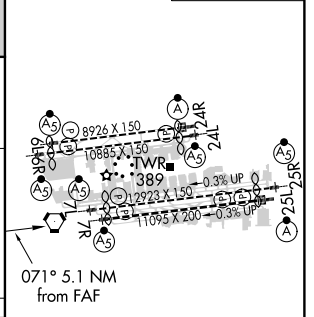
D-ATIS ARR <b>133.8</b> DEP <b>135.65</b>	SOCAL APP CON <b>124.3 363.2</b> (APCH FM WEST) <b>124.5 235.975</b> (225°-044°)	<b>124.9 269.0</b> (090°-224°) <b>128.5 360.7</b> (045°-089°)	LOS ANGELES TOWER <b>N 133.9 239.3</b> <b>S 120.95 379.1</b>	GND CON <b>N 121.65 327.0</b> <b>S 121.75 327.0</b> <b>W 121.4 327.0</b>	CINC DEL <b>120.35</b> <b>327.0</b>	CPDLC
---	--	--	--	---	---	-------



Procedure NA for arrivals at EXERT on V25 southwest bound.



ELEV 128	TDZE 7R 128
	TDZE 7L 128



CATEGORY	A	B	C	D
S-ILS 7R#	328/24 200 (200-½)			
S-LOC 7R	460/24	332 (400-½)	460/26	332 (400-¾)
SIDESTEP 7L	520/55 392 (400-1¼)		520-1½ 392 (400-1½)	

TDZ/CL Rwsy 7L, 24R, and 25L HIRL all Rwsy					
FAF to MAP 5.1 NM					
Knots	60	90	120	150	180
Min:Sec	5:06	3:24	2:33	2:02	1:42

SW-3, 04 JAN 2018 to 01 FEB 2018

SW-3, 04 JAN 2018 to 01 FEB 2018