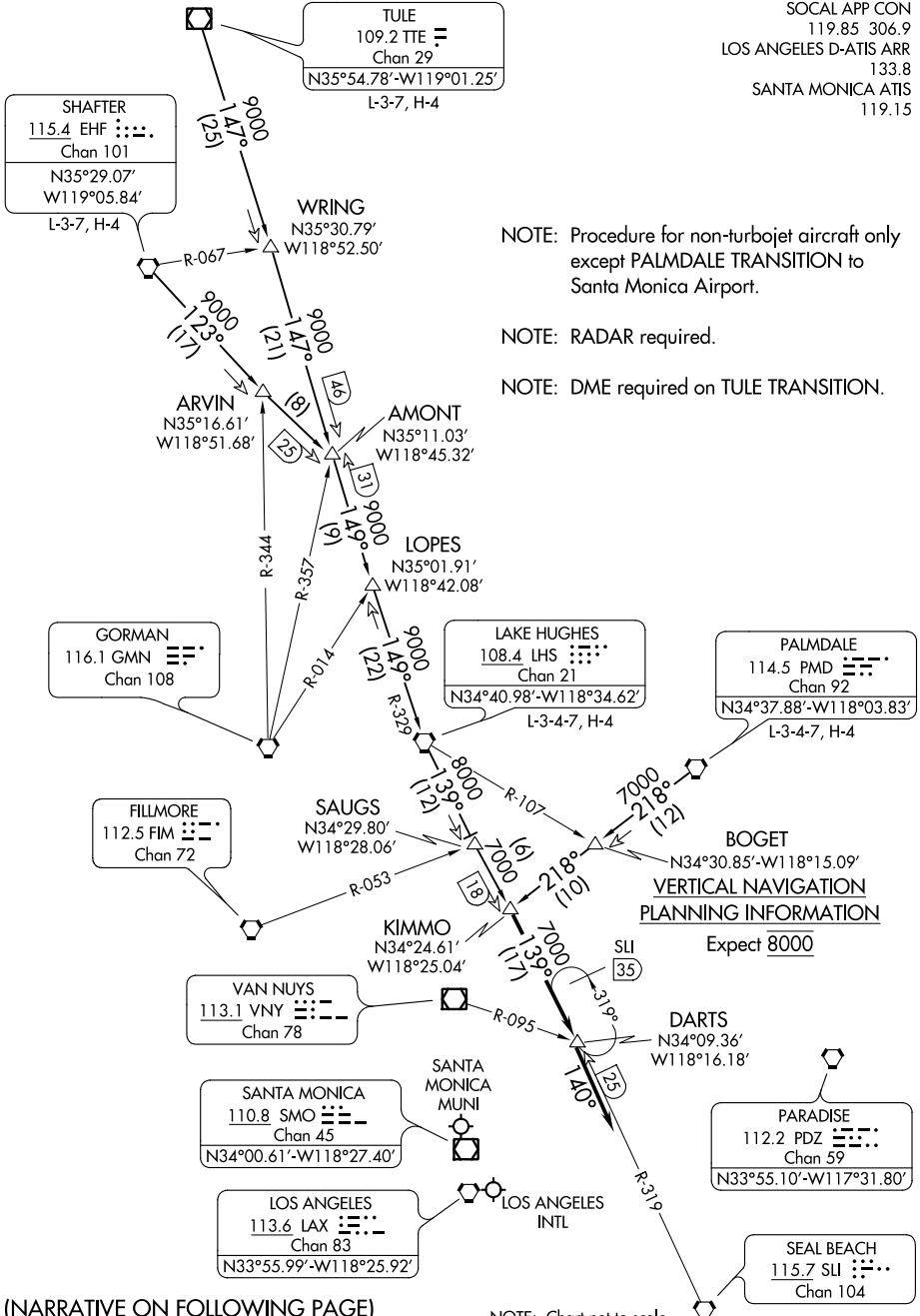


KIMMO THREE ARRIVAL

AL-237 (FAA)

LOS ANGELES, CALIFORNIA



NOTE: Procedure for non-turbojet aircraft only except PALMDALE TRANSITION to Santa Monica Airport.

NOTE: RADAR required.

NOTE: DME required on TULE TRANSITION.

(NARRATIVE ON FOLLOWING PAGE)

NOTE: Chart not to scale.

SW-3, 04 JAN 2018 to 01 FEB 2018

SW-3, 04 JAN 2018 to 01 FEB 2018

KIMMO THREE ARRIVAL

LOS ANGELES, CALIFORNIA